

CzechRepublic



# Taste Moravia!

Moravian and Silesian Top Attractions





**Published by:** the Moravian-Silesian Region, 28. října 117, 702 18 Ostrava, in cooperation with the South Moravia, Olomouc, and Zlín Regions, 2017.

**Created by:** Educa24 agency, [www.educa24.cz](http://www.educa24.cz).

**The photo source of Moravian-Silesian Region:** 1) DOV, 2) the Koprivnice Regional Museum, 3) the Silesian Museum) 4, 6) NPÚ, 5) the Muzeum in Nový Jičín, 9) Štramberk, 12) The Karlova Studánka Mountain Spa, 14) TIC Poodří, 15) Matyáš Theuer, Zdenko Hanout (Colours of Ostrava), Pavel Lebeda/sport-pics.cz (Zlatá tretra). **The photo source of Olomouc Region:** 1) Bernatice, 2) The Mariahilf Pilgrimage Site, 3) Andy Lloyd, Milan Tláškal, Petr Slavík, Ondra Pěnička, 4) Zuzana Pavlíčková, 5) Staré Město, 6) Velké Losiny Paper manufacture, 8) A. W. spol. s r. o., 9) The Bezděkov lavender farmstead, 10) MK Litovel, 11) the Litovel brewery, 12) NPÚ, 14) m-ARK Marketing a reklama s.r.o., Jaromír Král, 15) the Plumlov chateau. **The photo source of Zlín Region:** 1) Velehrad, 6) TIC Kroměříž, 8) Barum Czech Rally Zlín, Zlín film festival, 11) the Nativity scene Horní Lideč, 13) the Wallachian open-air Museum, 15) Resort Valachy. **The photo source of South Moravia Region:** 1) TIC Valtice, 2) the Moravian Karst, 3) NPÚ, David Židlický, 4) the Regional museum in Mikulov, Mikulov, 5) the South Moravian Museum in Znojmo, Znojemská beseda, 6) Nadace Partnerství, 12) the Moravian karst Singletrail, 13) Michaela Wecker, the Project Austerlitz, 14) Veletrhy Brno, a. s., 15) Automotodrom Brno.

**Not for sale.**

**ISBN 978-80-7576-022-7**



This publication is a product of cooperation of four Moravian regions (the Moravian-Silesian, the South Moravian, the Olomouc, and the Zlín ones), and originated as a presentation of top experience activities they offer in the tourism sphere. The goal of the cooperation is an effective promotion of the rich Moravian potential in both home, and international tourism.



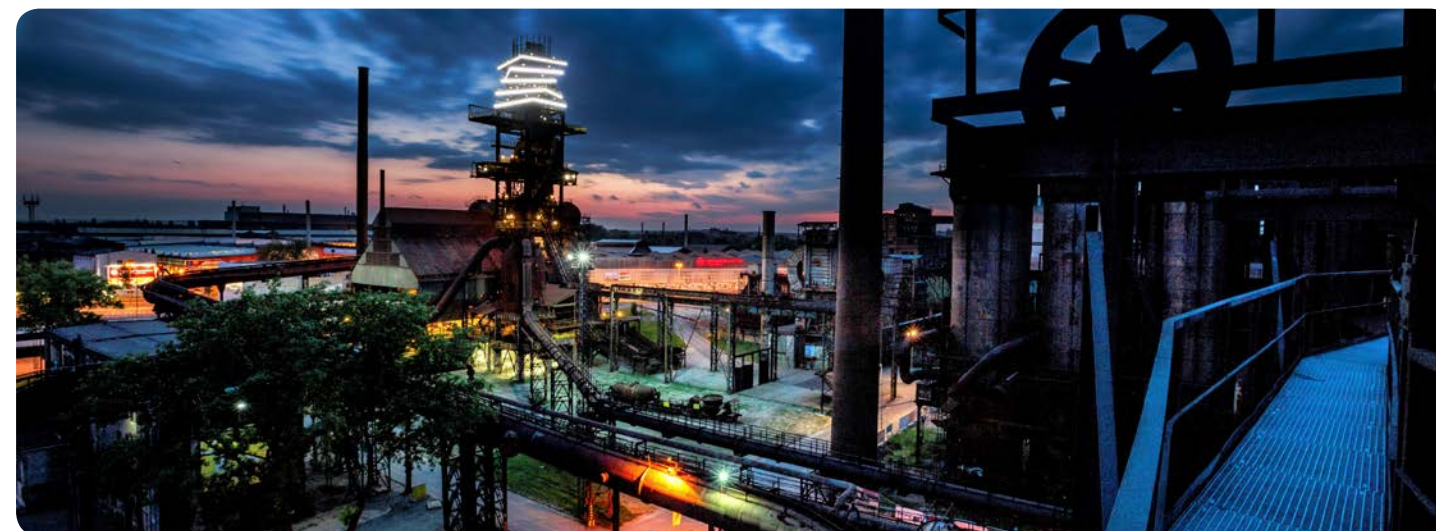


The Moravian-Silesian Region is situated in the north-east of the Czech Republic, and geographically, it is a very diverse country. It comprises six areas – the Beskydy and the Jeseníky Mountains, Opava and Těšín Silesia, the Ostrava Area, and the Odra River – Moravian Kravaře Area. The Hrubý Jeseník Mountains (Praděd; the altitude of 1,491 metres), stretching over to the neighbouring Olomouc Region, and the Moravian-Silesian Beskydy Mountains (Lysá Hora; the altitude of 1,323 metres), continuing to the Zlín Region and alongside the Slovakian border to Poland, are the most visited mountain ranges. Ostrava, Opava, and

Český Těšín (with an important Polish minority) are traditional cultural centres. You will find there a number of theatres, museums, galleries, and cinemas. The cities and towns offer a wide range of sport activities, too. The picturesque and colourful landscape of Moravia and Silesia offers innumerable options for holiday, tourism, sightseeing, and recovery stays. In summer, make use of a vast network of bikeways; in winter, go skiing to cross-country and downhill skiing centres (Hrubý Jeseník, Beskydy). In the region, you will find plenty of cultural-conservation areas (Nový Jičín, Příbor, Štramberk). The chateaus at Hradec nad Moravicí,

Kunín, Raduň, Kravaře (the Opava region), and Fulnek are all architectural gems. You can discover the oldest history at medieval castles (Sovinec, Hukvaldy at the foot of the Beskydy Mountains, and Starý Jičín). Given the technological tradition of the region, it is possible to develop industrial tourism there (the Kopřivnice Technical Museum, Dolní oblast Vítkovice, the Michal Coalmine National Cultural Monument, the Studénka Train Car Museum, the Ostrava-Petřkovice Mining Museum, etc.). On the borders, you can search the system of Czechoslovak fortification (the Hlučín-Darkovičky site). Some of the industrial and military monuments are to be

found as stops on the TECHNO-ROUTE, which, within the region, connects them and make them popular. The region provides ideal opportunities for recovery and rehab stays. The medical procedures make use of iodine-bromine water; holidays can also be spent at watersides (the Žermanice and Těrlicko dams). The region pulses with many an international event. Colours of Ostrava, a large music festival, is held there, as well as international sport competitions (the Golden Spike), or popular military-technique and fight-readiness exhibitions (the NATO Days).



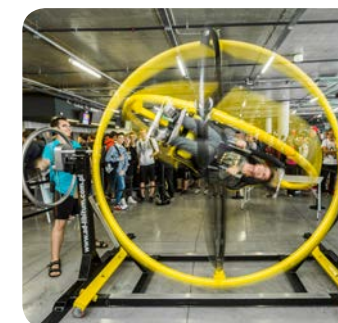
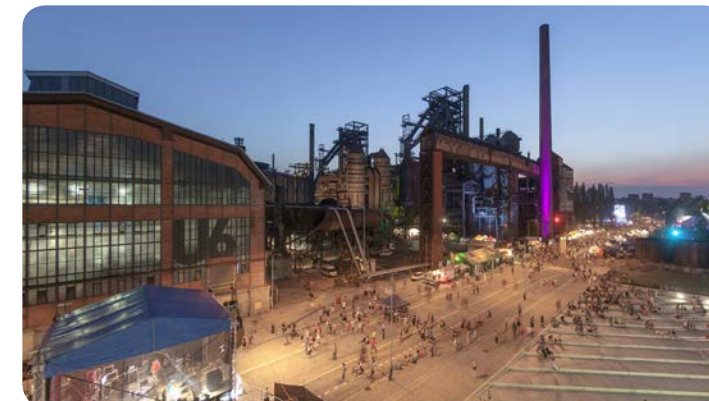
## 1 DOLNÍ OBLAST VÍTKOVICE AND THE SCIENCE AND TECHNOLOGY CENTRE

+420 724 955 121  
nkp@vitkovice.cz  
www.dolnivitkovice.cz



Dolní oblast Vítkovice – national cultural site comprises a vast industry area of the Vítkovice Steelworks and its architecture. Originally, there was a mine, a coking plant, and blast furnaces. The district is part of the European Cultural Heritage List, and thanks to the activism of the DOV society, it is starting to be used as a living museum and an educational, cultural, and social centre. As to the renewed objects open to public, there is a gasholder (now, the Gong multifunctional hall), a tower-tipped blast furnace (Bolt Tower), the central energy station no. 6 (the Little World

of Technology U6). In 2014, the Science and technology Centre – called STC – was opened. The Great World of Technology houses four permanent exhibitions, and a lot of short-period expositions. The visitors make use of labs, workshops, classrooms, the 3D cinema, and the Theatre of Science. The U6 Little World of Technology presents history of inventions dating from the steam engine up to nowadays. Moreover, the area hosts many events (Colours of Ostrava, City Cross Sprint cross-country ski race, and many others).







## 2 THE KOPŘIVNICE TECHNICAL MUSEUM

+420 556 808 421 [recepce@tatramuseum.cz](mailto:recepce@tatramuseum.cz) [www.tatramuseum.cz](http://www.tatramuseum.cz)

Many towns search for the symbols that would represent them. However, this is not the case of Kopřivnice, a small town under the Beskydy Mountains, which we know without having journeyed there yet. Your visit can be connected with the excursion into the Kopřivnice Regional Museum. First, head for the Tatra Technology Museum. It maps the history of the world-famous car factory, and you will see, under the same roof, more than 70 cars and unique technological specimens. As to the most interesting ones, there is a horseless carriage - "Präsident", Aerosleigh, and Tatra 600

"Tatraplan". At the entrance, the visitors are welcomed by a national cultural monument - the Slovak shot express-train car. Smelling of petrol and oil, you will cross the road to reach the **Dana and Emil Zátopek Exhibition** about the phenomenal Czech Olympic winners, or you can go to the **La-chian Museum** situated nearby. In the pictures of prehistorical landscapes, you will definitely recognize the style and talent of Zdeněk Burian, who was born in Kopřivnice. And before going home, refresh yourselves with folk customs and traditions at the **Fojtství Museum**.



## 3 THE HLUČÍN-DARKOVIČKY FORTIFICATION AREA

+420 595 051 110 [opevneni@szm.cz](mailto:opevneni@szm.cz) [www.szm.cz](http://www.szm.cz)

Bored with castles, chateaux, and galleries? - Surprise your family or friends with something new. Take them for a ride - on a bike, roller-skates, or on horses - around the Hlučín-Darkovičky Czechoslovak fortification area. Join an outdoor trip and a discovery of military technical monuments. The system of military fortification - which is, nowadays, kept up by the Silesian Land Museum, Opava - originated in 1935-1938, and it is formed by four infantry cabins and a light fortification object. Thanks to their elaborated technical details, the buildings fascinate both

men and women, not to speak about children. Moreover, there are part of the route of technical attractions - the so-called TechnoRoute -, which links important industrial sites in the Moravian-Silesian Region. Every year, the Darkovičky 2018 cultural event takes place here, which promotes the technical monuments on a massive scale, pointing especially at families and children. There are skill games and quizzes, performances of military history clubs, or some airsoft shootings. So, don't hesitate to come around.



## 4 MICHAL COALMINE IN OSTRAVA

+420 596 231 160  
[dulmichal@npu.cz](mailto:dulmichal@npu.cz)  
[www.dul-michal.cz](http://www.dul-michal.cz)

Can you imagine that somebody, after you leave the workplace, would stop the time and mothball everything just as was left after your departure? Does it horrify you? Or tempt you? This was done to the miners of the Michal Coalmine in Ostrava, and the unique, so-called last-workday museum exhibition was thus created. After the employees' departure, all was left where it had been placed before. And a visitor is astonished, going past the deserted industrial beauty... Nowadays, the Michal Coalmine is a sought-for national cultural monument. The construction started in 1842, the min-

ing ceased in 1994, and since 2000, the mine has been open to public. What is admirable about it - besides the unique exhibition of mine rescue work - is, especially, the preserved original technical equipment, which you can observe and touch during the tour. Besides this, the guides are mostly former miners, who like to tell you their own stories about going down the shafts. The Michal Coalmine also functions as a cultural and educational centre; it is a popular place for organizing various social events - for instance, family celebrations or weddings.



## 5 THE KUNÍN CHATEAU

+420 556 749 420  
[kunin@muzeumnj.cz](mailto:kunin@muzeumnj.cz)  
[www.zamek-kunin.cz](http://www.zamek-kunin.cz)



The Kunín Chateau is one of the peaks of the Moravian baroque architecture. In 1726-1734, Johann Lucas von Hildebrandt built it for the counts of Harrach, and it is his only project put into practice in the Czechlands. At the turn of the 18th and the 19th centuries, Marie Walburga established a modern educational institution, the alumnus of which was František Palacký. In the recent years, the chateau underwent a vast conservation renewal, rising literally like a phoenix from the ashes. You will find this out on your one very easily, as it is, thanks to the Ostrava-directed highway, easily accessible

from most directions. Go for a trip then, and be guided through sixteen authentically refurbished rooms with period equipment and collections, and get to know the most impressive, Baroque-styled chateau chimney system in central Europe. Take a glimpse at the workings and equipment of a small-scale noble manor linked to interesting lives of people across the centuries. Or, stop at a theme-focused exhibition, baroque-music concert, or another cultural event. There are a lot of these all the year around, and some of them are held regularly.







## 6 THE HRADEC NAD MORAVICÍ CHATEAU

+420 553 783 915 hradec@npu.cz www.zamek-hradec.cz

Make some time for a little trip, and discover a gem of architecture in the historical part of Silesia – a Prussian noble residence, Hradec nad Moravicí. The Red chateau was visited by Beethoven and Liszt. Every year, the International Festival Beethoven's Hradec takes place here. The Neoclassical White chateau was improved by the Lichnowski house from Voštica and Werdenberg. The Lichnowski built a unique chateau structure, which tempts the visitors by its moderate beauty and geometrical perfection. The chateau itself is encircled by a perfectly crafted park (the area of 60 ha) with interesting woody plants. After

visiting the park, try local gastronomy – cuisine specialties at a local pub. They tap beer brewed according to old recipes, and the meals are prepared from local sources. And if you happen not to be hungry and deal with different life choices – you love and are loved, so don't hesitate to plan a wedding on the spot! The White Chateau Ceremony Hall, or the park are the right places for pledges about marriage love and faithfulness. And the banquet may be in the Neoclassical style. We won't guarantee that your marriage will stay for ages, but we promise you will never forget your wedding.



## 7 THE HUKVALDY CASTLE

Join your interest in history and passion for music, and you have a perfect schema for your trip to the Hukvaldy Castle. You will smoothly mix medieval life with the life of the lower castle and folk culture, which was the source of inspiration for the fascinating works by the local native, world-famous Leoš Janáček. The castle was built in the 13th century, and its creation is linked to the name of Jindřich z Příbora from the Hückeswagen house (hence the name of the castle). For quite a long time, however, it was owned by the Olomouc bishops. Today, its ruin is an important cultural monument; a lot

of events take place here. If you want to join your trip and a musical experience, you need to come in summer. This is the time of Janáček's Hukvaldy, an international music festival. It is staged at the amphitheatre in the middle of the park, and, of course, on the castle courts. The concerts excel at creating a special atmosphere, and tempt both Czech and foreign visitors. The genius loci is made complete by the view of the Moravian-Silesian Beskydy Mountains from the viewing point built on the castle palace. It is amazing.

+420 731 660 808  
sprava@hradhukvaldy.eu  
www.hradhukvaldy.eu



## 8 THE SOVINEC CASTLE

Interested in history and architecture of our ancestors? Want to watch a fencing match? Do your children desire to know the place where princesses live? Set off for the Sovinec castle then. In the valley of the Nížký Jeseník Mountains, a 14th-century castle site towers up to the skies; it represents, nowadays, a fine piece of baroque military architecture. The castle's history is very long; its darkest chapter was written during the WWII, when it was the seat of the SS units. Nowadays, people tend to believe that there is a treasure, a wine collection, and secret German archives hidden under-

ground. The same rumour has it that near the slope of the hill it is situated on, there is an "owl princess" buried in a glass coffin. However, during the excavations, nothing was found. The local castle manager and some visitors claim that strange things occur on the castle walls at midnights. A white and a black lady, and a grey imp are supposed to appear there, and unexplainable sounds are to be heard. If you are not a scaredy-cat, come around and convince yourselves. And take your kids with you – they are better "detectives" than their parents.

+420 554 219 863  
sovinec@mubr.cz  
www.hradsovinec.cz



## 9 ŠTRAMBERK

Lovers of romantic small-town recesses, labyrinthine lanes, mysterious wooded folk architecture, and legends, pay heed. Once upon a time, there emerged, at the foot of the Beskydy Mountains, a magical town, where enigmatic past combines with pristine beauty of landscape. The place is, for its charm, bestowed a name "Moravian Bethlehem", though in the maps, the name reads Štramberk. The town is dominated by a gracious, stone-made cylindrical tower, Trúba, with a view. A few steps farther, you will find Šipka, a world-famous cave, where the oldest prehistorical settlement in our country has been

attested. Then, follow the scent of the local gingerbread dainty. It is called "Štramberk Ears", and it sends reminders to the legend of the victory over Tartare raiders. In their camp, the Štramberk inhabitants are told to have found salted ears, which they had cut off the heads of the Christians. Take a stroll, too, through the Dolní Kamenárka botanical garden; in the medieval limestone quarry, it is followed by a micro-reserve of environmentalists. You'll be amazed by stone labyrinth with an amphitheatre, chasm caves, and various species of plants.

+420 558 840 617  
mic@stramberk.cz  
www.stramberk.cz







## 10 THE BESKYDY MOUNTAINS AND LYSÁ HORA



+420 558 638 256 ✉ dm@beskydy-info.cz 🌐 www.beskydyportal.cz

“Beskyd, Beskyd, whom do you meet?” – These are the lyrics of the old Wallachian song, as if its author anticipated that before long, the mountains would be trodden not only by “black-eyed shepherds”. Recently, the Moravian-Silesian Beskydy Mountains have become extremely popular with tourists. They combine preserved scenery of the protected landscape area with a very decent assortment of tourist facilities in the form of chalets, boarding houses, viewing towers, and all sorts of entertainment and sport activities. Rare Carpathian animals and plants

occur in the mountains, and you will find here remnants of the original primeval forest and unique meadow ecosystems. The climb up their highest peak – the Lysá Hora (the Bald Mountain; the altitude of 1,323 metres) – is a must; it provides an amazing view of the Jeseníky and Western Tatra Mountains. The Beskydy Mountains provide sport experiences, too. The Beskydy Seven (the Czech championship in the mountain couple marathon) is run there, many slopes offer exquisite skiing conditions, you can try a parachute jump, or climb at rope centres.



## 11 THE JESENÍKY MOUNTAINS AND PRADĚD



+420 554 751 056 ✉ sekretariat@europraded.cz 🌐 www.jeseniky-rodina.cz

Lovers of promenades, mountain hikes, or passionate cyclists won't hear a bad word about them. We are speaking about the Jeseníky Mountains, a vast natural reserve, which is formed by Hrubý Jeseník, the Rychleby Mountains, Králícký Sněžník, and Nizký Jeseník. Feel free to choose one among hundreds of marked routes – both easy and more demanding, exactly in accord with your possibilities. If you set your feet on the local hills, you cannot miss the hike on the highest peak of the Jeseník – Praděd (the altitude of 1,492 metres). Most suitably, you can walk the education-

al route from the village of Karlova Studánka through the White Opava valley. You will see outstanding waterfalls, cascades and rapids, rock formations and the original vegetation (the primeval forest). You will finally reach the Barborka chalet. Award yourself with some delicious food at the restaurant and with a tremendous view from the viewing tower. If it is fine, you will spot the Beskydy Mountains, and, rarely, the Lower Alps in Austria. In summer, you may take the Jeseníky Bike Highway, which will turn into a network of cross-country routes in winter.



## 12 KARLOVA STUDÁNKA

+420 554 772 004  
✉ info@jeseniky-praded.cz  
🌐 www.jeseniky-praded.cz



If you need to chill out for a moment, to clean your head or lungs – don't hesitate to come and get pampered by the local landscape and friendly locals. An unparalleled location, healing climate, pristine landscape, and modern service in the settings of old – this is the Karlova Studánka area. It is to be found on the southern slope of the Praděd peak, in the valley of the White Opava rivulet. You will find there the wholesome mountain climate, mineral springs, pieces of idiosyncratic architecture, and a wide choice of regeneration and treatment procedures. Most lifestyle diseases

are cured here. The surroundings are a paradise of hikes and bike trips. In winter, it is possible to ski downhill in the very village, or to hit some harsher slopes in Jeseníky ski resorts. Once you've got tired by outdoor walking, you will definitely feel like relaxing at a spa pool compound, or at a wellness centre. Stop at the Vrbno pod Pradědem glassworks. You'll be enchanted by replicas of the so-called wood glass, which are, due to the creation formula, greenish and bubbly. You can buy some, or blow your own. It's an experience of a lifetime!



## 13 THE TĚŠÍN SILESIA AND HRČAVA



+420 558 321 280 ✉ management@tesinskeslezsko.cz 🌐 tesinskeslezsko.cz

The Těšín Silesia lies in the fringe area of north-eastern Moravia, bordering with Poland and Slovakia. In this country of old, a lot of traditions and legends have been preserved. The symbiosis of the Silesians, Slovaks, and Polish have left its traces in the peculiarities of the local cuisine and architecture, having given rise to a specific accent “po našymu” (“The Way We Speak”), too. The centre of this traditional, górolski culture is the Górolsko Swoboda region. Nearby, you will find Trojmezí (Three Borders; near the village of Hřčava), where Czechia, Slovakia, and Poland meet.

There is a 1936 wooden St Cyril and Methodius Church. The legends are not absent from the highest peak of the Silesian Beskydy Mountains, Velká Čantoryje (995 metres), as well. The rumour has it that inside the mountain, there is a sleeping army that will wake up once the Silesian people is at their worst. The name is, as well, shrouded in mystery. Was it a raging place for devils, who dug their hooves into the ground (hence the name in Czech – “Devil-dig”), or is the mountain called according to common centaur, herb regionally named “čantoryjka”?







## 14 THE ODRA REGION AND THE ODRA REGION NATURAL RESERVE

+420 604 325 376 info@moravsketravarsko.cz moravsketravarsko.cz

The Odra Region is situated in the northern part of the Moravian Gate, and its natural axis is formed by the Odra River. Ponds, the main region's feature, are the reason why it is sought for by anglers, ornithologists, and nature lovers. The territory is interwoven with tourist routes and many bikeways (the Amber Path, the Cracow–Moravia–Vienna and Odra–Morava–Danube Greenways). The Kunín Chateau with an outdoor bowling alley, and the Bartošovice Chateau with the Moravian Kravaře Region exhibition are definitely worth seeing. Visitors will be pleasingly sur-

prised by the Moravian Brethren Museum, the plane display at Suchbát nad Odrou, or the Native House of J. G. Mendel, the founder of genetics. Sportspeople may borrow go-karts on the parking depot of the Mošnov Airport, or to climb up the Kanihůra viewing tower at Bílov. At museums and tourist offices, search for straying imps from the Fairy-Tale Odra Region project. You'll meet the Picmochs, shaggy-haired Flame, or a will-o'-the-wisp named Little Anchor. And you can win fancy prizes, too. All you need to do is collect sticks in your fairy-tale passports.

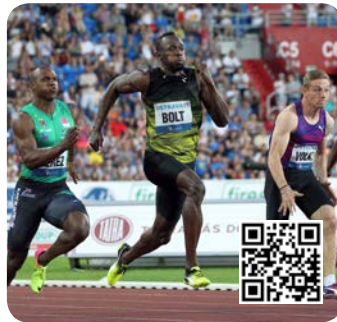


## 15 COLOURS OF OSTRAVA - THE GOLDEN SPIKE - THE NATO DAYS

www.colours.cz www.zlatatretra.cz www.natodays.cz

Despite being stamped as a mining city and a region with environmental issues, Ostrava is trying to breach this inertia-based image with outstanding international projects. The fact that the Ostrava lifestyle has, for a long time, been colourful, is proved by the Colours of Ostrava international music festival. It takes place in the breath-taking area of Dolní Vítkovice, joining thus the beauty of the steelworks and the lightness of fun and dance. In four days, you won't probably see all 350 events on 20 scenes, but you will definitely experience some fascinating fun. Next,

a special place in sport lovers' hearts is reserved for the Ostrava Golden Spike, international athletic meeting of the World Challenge IAAF category, where the guests are the most renowned world's athletes (Usain Bolt, Jan Železný, Bára Špotáková, or Pavel Maslák). The Ostrava NATO Days, the largest airforce-army-defence event in central Europe, are also very popular. Their goal is to show to the public the military forces via which NATO guarantees our security. To cut the long story short, Ostrava is full of life and fun.



**The Olomouc Region** comprises two original tourist areas, which appeal to mountaineers, bike tourists, and fans of historical, technical, and natural monuments, too. **The Central Morava region** is rich in preserved folk culture. The centre of the area is Olomouc, the regional capital. It has an atmosphere of an ancient place, but thanks to university students, it keeps young and fresh looks. The vast city conservation area includes a multitude of historical monuments. The Baroque, UNESCO-listed Column of the Holiest Trinity hovers over the Upper Square. However, history lovers should set off for the city surroundings, too, as there

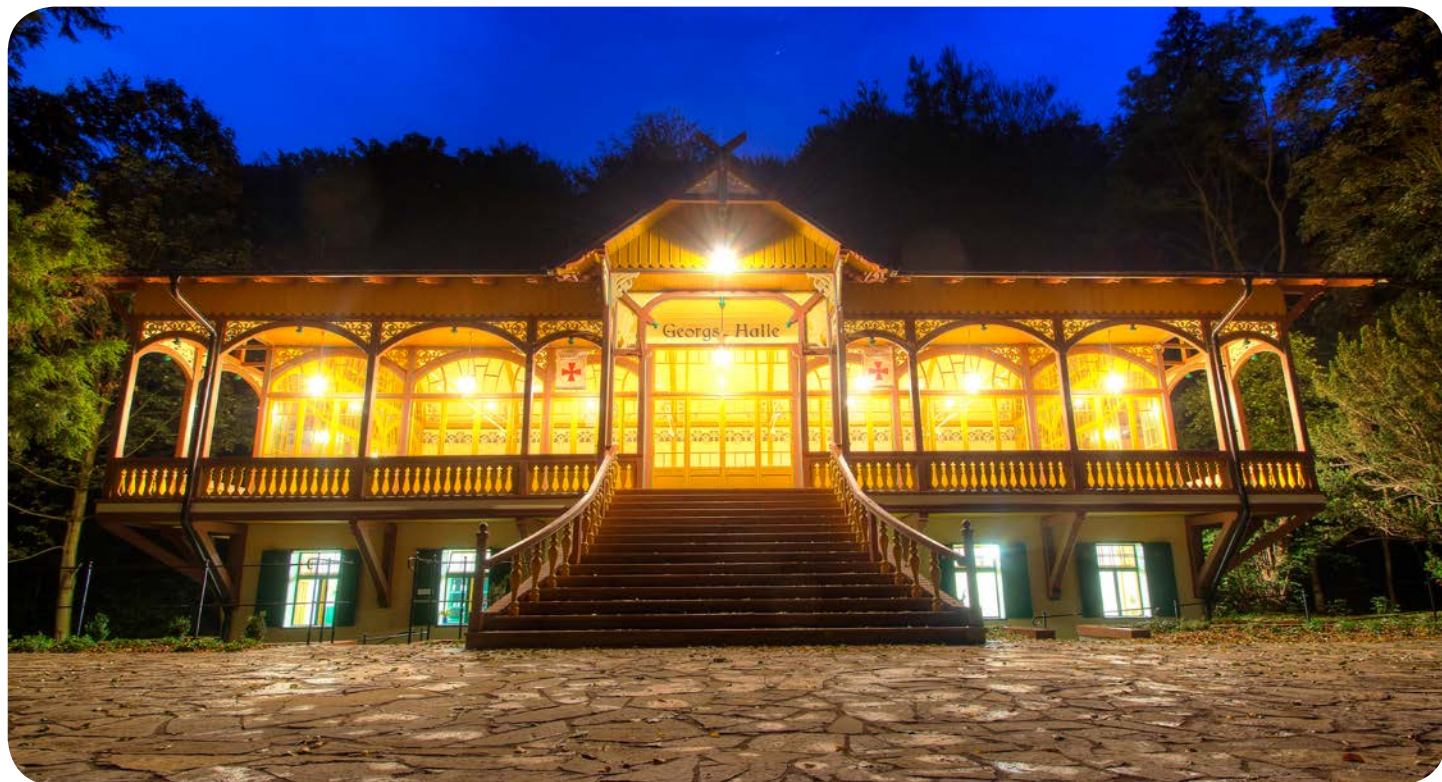
are Šternberk and Bouzov, both preserved medieval castles, the Classicist and Renaissance chateaus of Čechy pod Kosířem and Plumlov, and the Olomouc Archdiocese Museum or the Šumperk Homeland Museum. You'll be pleasantly surprised by the Moravian cuisine, and the principle of its dutiful production. You definitely need to have a taste of the Olomouc Tvarůžky cheese, an amazingly forceful, aromatic cheese, which goes best with onion and beer. If you don't decline the offer of the Litovel Brewery or the Loštice Olomouc Tvarůžky Museum, you'll get to know how the cheese and the beer are created. **The Jeseníky Mountains**

will enchant you with a range of tourist activities, recovery sojourns, and active holiday stays. Cyclists will be impressed by more than 1,500 kilometres of bikeways. The Rychleby Mountains and the Lipová routes are tremendous. Snow lovers will appreciate a multitude of ski resorts. The largest ones are Kouty nad Desnou, Cervenohorské sedlo, and Ramzová. Hikers can, altogether with their Polish friends, climb up the Kralický Sněžník, or Praděd peaks. In the mountains, they'll discover the unique Forest Bar, or the Angeliarium (a sculpture site near Rejchartice). You can chill out at the Velké Losiny Thermpark, or the Jeseníky Priessnitz's recovery spa,

both renowned wellness centres. You'll feel nice at the Rejvíz thematic restaurants, or at various cultural events. Blues fans cannot omit the famous Blues Alive in Šumperk. Take your kids to Velké Losiny – they'll learn how paper was produced. They can give it a try and take some with them as a souvenir. For you, the best reward will be their satisfaction and pleasure in having a perfect holiday. The Olomouc Region is the ideal place for family tourism and stays. By buying the www.olomoucregioncard.cz tourist card, you can save a lot of money on your Olomouc Region trips.







## 1 THE CANCER VALLEY DANCE HALL

+420 583 034 125 ✉ tancirna@bernartice.eu 🌐 www.tancirna.rychleby.cz

When in the Rychleby Mountains, you cannot miss the Cancer Valley Dance Hall – a beautiful, Art-Nouveau building (1907), which is called the Heart of the Rychleby Mountains. It is a unique cultural place – situated at the cross-roads of several hiking routes and bikeways –, which gives dancing nights, exhibitions, workshops, weddings, as well as the Day of Architecture and experience workshops for children. Submerged in the rhythm of swing, you come back to the period of the First Republic, or, in harmony with the surrounding nature, you may dive into exquisite classical music. The

programme of the Dance Hall does not forget the youth either. If you want to relax or chat for a while, make use of a nice café situated nearby; the area, however, also comprises a tourist office and a children's corner. The Dance Hall, the dilapidation of which was stopped thanks to public, is newly reconstructed (2015; the Sborowitz Studio). The building was awarded a special prize in the 2015 Rudolf Eitelberger Award Contest, and came first in the 2016 survey "Seven Wonders of the Olomouc Region". Come around and check its beauties on your own.



## 2 REJVÍZ AND THE MARIAHILF PILGRIMAGE SITE



+420 606 418 460 ✉ tichopadovar@seznam.cz 🌐 www.mariahilf.eu

The Rejvíz National Preserve is situated in the north-east of the Jeseníky Mountains, between the towns of Jeseník and Zlaté Hory. What is characteristic of it are vast peatlands of the water-divide highland type. The local conditions are favourable for colourful species of plants and animals. As to the former, you will see common sundew, with a boreal owl, a survivor from the glacial age, flying over your head. The excursion path starts at the Rejvíz Guesthouse, where you may get some boost and admire unique wood-carved chairs decorated with the heads of the old locals, and leads

up to the Big Moss Lake. If you desire repose and solitude, set off on a journey through deserted woods until you will reach the Mary Help (Mariahilf) Pilgrimage Site. In the forest, you will discover original architectural sites, an opportunity to relax, to listen to the silence, or to meet the God. The pilgrimage site is traditionally devoted to prayers concerning fortunate births and unborn babies. Since 1995, when it was renewed – it originated in 1718 and went out of use in 1973 –, it has helped many pilgrims to find a way to their own minds.



## 3 THE RYCHLEBY PATHS

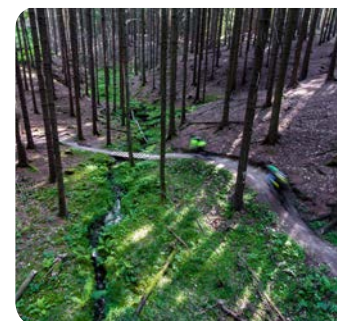


+420 607 061 445 ✉ info@rychlebskestezky.cz 🌐 www.rychlebskestezky.cz



Do you ride mountain bikes, and you would like to spend your holiday at a beautiful and bike-friendly place? – Set off on the Rychleby Paths then! – You will find a tremendously thought-over system of bike trails, which were especially designed for fun rides in a magnificent landscape. Give a try to old, root-overgrown stone paths (Wales), a journey over boulders and footbridges (The Whale), or a relax route for nature lovers (the Vidnava Tour). Do not be afraid of coming around in the bad weather – it is possible to ride all the paths in the rain, the system being open from April to October. In scorching summers, you will get your refreshment in flooded quarries, which are situated near

some of the routes. All trails start and end in the village of Černá Voda, at the so-called Base Camp – the local tourist office. You do not need to bother with transfers and to combine goals, as the routes are closed units. Got no bike? – No big deal. The tourist office runs an all-year hire service of fully-sprung bikes, providing lessons on MTB riding, the complete information service concerning the route and the surroundings, accommodation and refreshments. Moreover, you will find there a bike shop and a bike wash service. You may buy souvenirs for your friends and family, or to meet local bikers, who usually work here part-time on first Saturdays of the month.





## 4 THE FOREST BAR

+420 739 473 457  
barlesni@seznam.cz  
www.lesnibar.cz



Has it ever happened to you that when climbing up a mountain, you learned you had left your snack at home? It is very unpleasant, and it may ruin the whole trip. In the Jeseníky Mountains, they take care of the mountaineers, so they created a unique, self-service Forest Bar, which is to be found on the hiking route from the village of Horní Lipová, after a 2-kilometre walk in the direction of the Smrk Mountain (1,125 metres). The bar originated in summer 2007, serving as a pleasant layby for passing mushroom-pickers, tourists, or cyclists. A long ago, the local forester, who was to find the wonderful recess and establish the bar, left his drink to get some refreshment after the work. However, once he found

his bottle empty, and money on the stone accompanied with a message: "Thanks, it hit the spot!" He laughed at the joke and got the idea that it would be great to leave in the forest small refreshments for the others, not only for himself... The news about the unusual service spread quickly, and the Forest Bar, as the place started to be called, is, at present, made use of by tourists and passers-by all year long. As time passed, the choice has become wider, a money box has appeared, and people have started to visit the place not only as part of the trip, but also out of fun and curiosity. So, stop for a while as well. You get double hungry in the mountains...



## 5 THE INTERNATIONAL CLIMB UP THE KRÁLICKÝ SNĚŽNÍK

www.nakralickysneznik.cz

Mountain hike lovers, do not miss the International Climb up the Králický Sněžník Mountain, which has taken place each year (since 2010) on the first September Saturdays, with the participation of several hundreds of incomers from the Czech Republic, Poland, and other states. It starts on the square at Staré Město; there, you take a bus to the chalet of Návrší nad Stříbrnicemi – the first refreshment stop. Before reaching the top, relax at the statue of an elephant which refers to the cultural activity of the Prague German group "Prague Secession". In 1922, it was established by young art-

ists to promote the Czech-German partnership. The elephant has become the symbol of Králický Sněžník, and the remnants of the old chalet from the previous century prove that already in the past, the mountains were attractive for tourists. Nearby, discover the spring of the Morava, and on the very top, at the remnants of the viewing tower, meet your friends who have climbed the mountain from the Polish side. Get your experience not only from the sport effort, but also from the meetups with a lot of interesting people.



## 6 VELKÉ LOSINY PAPER MANUFACTURE

+420 583 248 433 vstupenky@rpvl.cz www.rpvl.cz



Do you know how and from what paper is produced? Have you ever heard about the writing materials used before its invention? Have you got curious kids and want to go for a fun trip with them? Then there goes the tip: discover the Velké Losiny paper manufacture together. It is situated in the picturesque valley of the Desná River, at the foot of the Jeseníky Mountains. The paper workshop was built, in the precinct of a former grain mill, in 1591-1596 by Jan the Elder of Žerotín, and nowadays, it is one of the oldest functioning manufactures in Europe. It provides a unique insight into the

workshop at full operation, so you will enter the process of paper making and unearth the ancient secrets with your own eyes. You will see how paper is created, materials, tools and machines, sheet moulds, filigrees, and learn about the history of the local paper manufacture in the rich collections of the Paper Museum. If you are both courageous and skilful, you can try to make paper on your own. You will have your own small gift, which will appeal both to you and to those whom you will send a message written on it.



## 7 THE ANGELARIUM

+420 732 537 643 andelarium@gmail.com www.andelarium.cz



The Jeseníky Mountains are well known for their inimitable landscape. However, there is a place that will surprise you with its pure beauty. After leaving Šumperk – after passing the Rejchartice branch –, you will get stupefied by an unattended view. From a meadow over the road, the valley is observed by motionless wooden figures – angels. However, they do not materialize by a miracle! Annually, since 2013, there has been, the third week in July, the Angelarium. It is a meetup of craftspeople over the trunks from the local woods – hidden messengers of beauty. The whole

week long, the wood changes and comes alive under their hands – and Friday seals the metamorphosis. For the first time, angels leave the Earth and transport themselves to the meadow – not by waving wings, however, but thanks to sophisticated machinery. As it gets darker, torches are lit in front of each of them, the magic of the metamorphosis reaching its peak. The first concert starts, and the Saturday comes, the final celebration. You will not miss programmes for kids and adults, music, good food and drinks. Make your way to the Jeseníky Mountains to touch – an angel.







## 8 THE OLOMOUC CHEESE MUSEUM

+420 583 401 217 ✉ awmuzeum@tvaruzky.cz 🌐 www.tvaruzky.cz

Know that production history of Olomoucké tvarůžky is more than 500 years old? – That it originated as a homemade cheese, which is nowadays protected by a geographical indication? – And that, in the village of Loštice, there is even the Olomoucké tvarůžky Museum, where it is possible to learn a lot about their history, production and ingredients, and to taste and buy them in more than thirty mass and shape variants? The A.W. company has been producing them, as the only one in the world, for 140 years, and there is also a vintage cinema to be found in the barrier-free museum.

Here, films are screened about its production and history. You don't? – So come and feel their irreplaceable flavour and distinctive scent in person. The Olomoucké tvarůžky are a delicacy which fits, thanks to its ingredients and taste peculiarities, the requirements of modern gastronomy. A high percentage of proteins and a reduced amount of fat are behind the fact that they are a searched-for part of diets. The exceptional perfume and taste tone predestine them for usage in a wide range of meals and recipes. In a word, it is a dainty.



## 9 THE BEZDĚKOV LAVENDER FARMSTEAD

+420 604 744 534 ✉ info@levandulovystatek.cz 🌐 levandulovakavarna.cz

Lukáš Drlík and his partner, Veronika Pejšová, know their deal about dreams coming true. Their fulfilled dream smells of lavender. Thanks to a boom of rural tourism, they have been welcoming, for three years now, thousands of visitors at their Bezděkov Lavender Farmstead. There is a Lavender Gallery to be seen – a perfumed exhibition where you learn all you want about lavenders. After some learning, you may buy selected original homemade lavender products at a local cosy shop. Lukáš and Veronika will be at your disposal during a guided tour – so try to cut

and shape your own bouquet, or to enjoy a yoga lesson. If you want to get married in a lavender style or to give a lavender-scented family party, it is as well possible over here. After the matters are settled, the farmstead will be at your disposal, and the lavender memory of the most beautiful moments spent with your relatives will be with you forever. And, before leaving, do not miss a gastro-experience: discover the original Lavender Café in the heart of the town of Zábřeh, which has been run by Lukáš and Veronika since 2015.



## 10 THE HANÁ VENICE

+420 602 740 826 ✉ klub@mklitovel.cz 🌐 www.hanackebenatky.eu



At Litovel, summer starts in mid-June, and you are welcome on the spot. So make your way to the Haná Venice, a one-day festival taking place each second Saturday in June. The event hosted by the Litovel Town Club has developed a fifteen-year tradition, offering, at the same time, a colourful programme with a spark of newness each year. On the square, there are performances of bands of many styles; the playlist is focused on all age groups, so it includes dance shows, children's programmes, and games as well. Moreover, the organizers prepare a fair and farmers'

markets. Altogether with the festival, there are other Litovel monuments and exhibitions at your disposal. The greatest attraction is, however, a boat cruise on the Nečiz, a tributary of the Morava, during which you will get below the level of the square, so as to be able to admire the torch-lit historical arcades. The vaulted part of the Nečiz – the rivulet embedded below the houses in the town centre – is a unique protected technical monument. The festival closes with an amazing firework taking place at the pond side, and many a visitor will be pleased at the festival token charge.



## 11 THE LITOVEL BREWERY EXCURSION

+420 724 776 392 ✉ navratilova@litovel.cz 🌐 www.litovel.cz

Want to know how the traditional Czech beer is brewed? – What the brewhouse, fermentation room, and the lager cellars look like? – Brewing history in a wider context? – Touch the contemporary and historical brewing tools and accessories? – And, finally, cool yourself down with a degustation of the "goldish drink"? – There's nothing simpler than that. Have a day off and extend your knowledge on the excursion in the Litovel Brewery, with a more than 700-year history of beer making. We will show you the brewing procedures, and after the excursion we will offer you

a degustation of beers in the visitors' centre, where you can visit the historical, museum-like exhibition on brewing history. The excursions take place from 10 to 15 on weekdays. The guided tours are for fifteen and more people, and individuals can join the groups as well. Is it not enough? We will, then, invite to our mini-brewery where you can try what it is like to brew beer. Under professional surveillance, you will produce your own beer, following the recommended recipes of experienced brewmasters; or, you can create your own original beer. So cheers in Litovel!







## 12 ŠTERNBERK – A CASTLE, A MONASTERY, AND FAST CARS

+420 585 012 935 ✉ hrad.sternberk@npu.cz 🌐 www.hrad-sternberk.cz

Desire to see the times of knights and maidens? Feel like going for a history trip? Little will do; and what is more, you do not have to saddle your horse or hire your servants. Climb to the excursion of the Šternberk Castle, which was founded in the 13th century by Zdeslav z Chlumce a ze Šternberka. The inside of the castle will surprise you with its exquisiteness and rich decoration, a display of mostly 15th-century artefacts brought from all over Europe. However, the Šternberk Castle hides some unexpected technical achievements, which will shock even the experienced adven-

turers – a personal lift with an engine room, a reconstructed attic area, and a Liechtenstein kitchen. Many a cultural and social event takes place here, but you may also say “yes” to your beloved one at the castle. The marriage concluded in these historical settings must hold for years. Near the castle, there is a former 18th-century Augustinian monastery. During the 30-minute tour, you’ll learn everything about the history of the town and the place. Moreover, if you’re into fast cars, visit the Šternberk Ecce Homo route car race in June.



## 13 THE STARÉ MĚSTO FORTRESS AREA

+420 732 530 774 ✉ bbck@opevneni-stm.cz 🌐 www.opevneni-stm.cz

It is not so long that our Republic invested huge sums of money into building borderline defence systems, which we were forced, on the eve of the Second World War and with no fight at all, to hand over to Nazi Germany. In many cases, therefore, the sites of military bunkers remained completely untouched, and thanks to many a military history fan group, they are open to public nowadays. So, follow the traces of our dramatic modern history to borderline fortresses. For starters, you may take the Staré Město Fortress Sites excursion route in the Jeseníky region, which

comprises the five largest objects in the Staré Město close surroundings. Here, more than 57 objects of light fortification were built, and a heavy fortification section was marked out in the space span of 26 kilometres between Králický Sněžník and Hrubý Jeseník. What a climb! Once you’ve made it and searched through the depths of the bunkers, stop, on your way back, at the Military Museum at Staré Město, where the former barracks provided space for an exhibition on history of the 1935-1938 permanent Czechoslovak fortification and of the Czechoslovak army.



## 14 THE ČECHY POD KOSÍŘEM CHATEAU

+420 773 784 110 ✉ kastelancpk@seznam.cz 🌐 www.zamekcechy.cz

Want to live a life of a lord or a lady? – Dream about walking in one’s own park, chasing game, or drinking tea or coffee in a parlour? – We won’t offer you a job of the chateau owner, but it is still, even nowadays, possible to live, for a couple of minutes, in the old times of noble manners. Set off on the right foot, get some fancy clothes, and make your way to the Čechy pod Kosířem chateau. Once you’ve entered, you will get into the world of the turn of the 19th and 20th centuries. The newly reconstructed interiors will bring you back to the period of Silva-Taroucy, count

of the Franz Josef I period, whose pride was a large collection of Josef Mánes’s paintings. A nice surprise is the Jan and Zdeněk Svěrák Museum. It displays original props, scripts, and settings of their movies. A little bit farther away, you will find a unique exhibition of historical bikes (the collection of the Olomouc Motherland Museum). Once you’ve tasted enough of it, order a guided tour of the vast English garden, which also includes a climb to the Red Tower, providing you with a wonderful view of the Kosíř Hill.



## 15 THE MYSTERIOUS PLUMLOV CHATEAU

+420 775 999 815 ✉ zamek.plumlov@seznam.cz 🌐 www.plumlov-zamek.cz

“The Chateau of Plumlov lies behind a bough / I have got conscripted / don’t even know how” – these are the lyrics of a Haná folk song, and its author would definitely like the fact that the Plumlov Chateau still operates, being open to public. It is a most idiosyncratic building, as the original project was modified in many ways. The chateau, built by the Lichtenstein house in 1688 in the area of the Plumlov castle, possesses only one complete wing out of the planned four ones. However, this one is enough to give evidence of the grandiose intentions of the builder. The object is to

be found in the town of Plumlov, situated 8 kilometres from Prostějov, at the foot of the Drahaný Downs, over the Podhradí pond. The excursion encompasses three visitors’ tours, where it is possible to have a look at chateau historical expositions with frescoes and stucco decorations, and various permanent and seasonal exhibitions. The Plumlov Fencing Weekend is a top summer event. It offers historical dances, period music, animals, arts and crafts, blacksmiths, stands, and, first of all, performances of several fencing teams.





# Zlín Region



The Zlín Region area forms an indented landscape. For most part, it is hilly, made of rolling land and mountain ranges. The Haná region – which is situated in the Morava river valley in the Kroměříž district – is, on the other hand, a flat, fertile land, whereas Wallachia possesses hill ranges and an idiosyncratic culture. The Moravian-Silesian Beskydy Mountains, the Javorníky Mountains, the White Carpathians, and the Hostýn Hills are all important ranges. The Zlín Region is a specific tourist area; it is attractive thanks to a multitude of natural, cultural, and historical sights. It offers mountain hiking, spas, viniculture valleys, archaeological sites dating from the Great Moravia epoch,

church monuments and valuable historical buildings, as well as the modern Bata-founded functionalist architecture (Zlín). The region provides a wide range of sport activities. The high-quality ski routes for both cross-country, and downhill skiing, are to be found at Pustevny, Kohútka, Velké Karlovice, and the Hostýn Hills. Along the Bečva River, there goes a modern bikeway, which extends the network of Moravian, Austrian, and Slovak routes. Rock climbers can find their training sites in the Lačnov, or Devil's Rocks. The original experience is brought about by the Baťa waterway voyage, the waters of the Horní Bečva, Bystřicka, Ostrožská Nová Ves, Rusava, Smradavka, and Lu-

hačovice serving, on the other hand, for aquatic entertainment. Many visitors seek to stay in the Zlín Region due to recovery, relax and holiday stays. The Luháčovice spa is especially popular in this sphere. They have developed a long tradition of the spa treatment of air passages, digestion, diabetes, and motion apparatus. It is the natural healing springs, favourable climatic conditions, and the peculiar architecture that made them particularly famous. The world renown is connected to the Under-Chateau Garden, the Floral Garden, and the Archbishopric Palace at Kroměříž, which are included in the UNESCO World Cultural Heritage List. The Buchlovice chateau, the Bu-

chlov castle, the Velehrad pilgrimage site, and Hostýn are all worth paying visits. The Great Moravia Memorial at Staré Město, the Modrá Archaeological Open-Air Museum, the Wallachian Open-Air Museum at Rožnov pod Radhoštěm, or the Pustevna buildings are all singular sights. An experience of folk culture and traditions is also provided by the Christmas Annual Fair at Rožnov pod Radhoštěm, or St Nicholas' and the Devil's gift-distribution at Velké Karlovice. However, not even contemporary culture is ignored in the region – each and every year, the Summer Film School is held in Uherské Hradiště, and Zlín hosts the International Festival of Children and Youth Films.

Czech Republic

## 1 VELEHRAD AND MODRÁ

From time to time, we all need to slow down and to make it clear to ourselves who we are, and where we come from. The places which offer you such contemplation are not abundant. One of these is Velehrad – the pilgrimage area, where a 1,000-year history has written its legacy into every piece of stone. The heart of Velehrad, the history of which reaches to the beginnings of the local Slavic settlement and the Christianisation, is a large Cistercian monastery and a basilica of the Ascension of the Virgin Mary and of Saint Cyril and Methodius. Originally a 13th-century Romanesque building turned into a majestic Baroque temple is the goal of pilgrimages.



+420 571 110 538  
info@velehradinfo.cz  
www.velehradinfo.cz

In the vicinity, on the original archaeological site of the Great Moravian period, there emerged the singular Modrá Museum, which represents a fortified 9th-century Slavic settlement of the middle Morava region. Within the excursion, you will bake your grain pancake, or shoot an arrow from a wicker bow.

+420 572 501 823  
archeoskanzen@email.cz  
www.archeoskanzen.cz

Afterwards, stop at the "Living Water" Botanical and Freshwater Exhibition, where you may observe the local fish in a glassed underwater tunnel.

+420 576 519 363  
info@zivavodamodra.cz  
www.zivavodamodra.cz



## 2 THE BUCHLOVICE CHATEAU AND THE BUCHLOV CASTLE

+420 572 434 240 buchlovice@npu.cz www.zamek-buchlovice.cz  
+420 572 595 161 buchlov@npu.cz www.hrad-buchlov.cz

Buchlovice are an ideal starting point for travelling around the Slovácko region. In the small village, you will find a beautiful Baroque chateau with a vast garden, the Lower Castle Museum, and other curiosities. The medieval Buchlov castle, which has been collecting exhibits since the 19th century, hovers over the town, accompanied with St Barbara Pilgrimage Chapel. It belongs to the oldest castles in the Czech Republic. It originated in the 13th century, and its significance lies in the preservation of the original architectural layout. The invincible

fortress is, at the same time, an example of interior change of a Gothic castle into a comfortable Renaissance residence. On the castle court, pay heed to the ancient Linden of Innocence, which was planted there (with the roots upwards) by a young, execution-sentenced prisoner, in order to prove (in case it will turn green) his innocence. Once you've searched the castle, make use of the rich network of tourist routes, bikeways, or horse ways, and set off for the wooden recesses of the Chřiby hills.



## 3 UHERSKÉ HRADIŠTĚ

+420 572 525 525  
mic@uherske-hradiste.cz  
www.uherske-hradiste.cz



If you like history and monuments, the city of Uherské Hradiště – the heart of the Slovácko region – will not let you down. The first mentions about the settlement date back to the prehistorical times. In the 9th century, there was the centre of the Great Moravian Empire. What has left from these times may be found, for instance, on the St Methodius Heights (the quarter of Sady). The Christian missionaries built there one of the first wall churches north of the Danube. From the posterior periods, the Franciscan monastery, or the 17th-century Jesuit College – today's Slovácko Cen-

tre of Culture and Traditions – are worth seeing. Moreover, all year long, the city and its surroundings offer wine-tasting festivals, folk festivals (such as the Slovácko Feast with the Tradition of Law Acquisition), and plenty of culinary events. During the holiday, Uherské Hradiště hosts the Summer Film School. In eight theatres, you can watch more than 200 movies, and within the scope of the accompanying programmes, you can experience magnificent theatre performances and concerts. On these days, the town is full of youngsters, and the mirth is made in every corner.



## 4 THE BAŤA CANAL

+420 518 325 330  
ic@batacanal.cz  
www.batacanal.cz



Who wouldn't like to experience a different, but still family-oriented holiday? Adrenaline, romance, active discovery of nature and sights... Opt for a Baťa waterway voyage and you get everything in one package! In a rented house boat, you will taste seafaring adventures and the romantic stops at early-evening reeds. During a slow journey, you can savour a glass of Moravian wine, or admire the landscape along the river. Take bikes with you. All along (from Kroměříž to Hodonín), the Baťa waterway (built in 1934-1938) is lined by a nearly 80-kilometre bikeway. In the Zlín region, it

does not mix with car roads (from Kroměříž to Uherský Ostroh), you can thus combine the voyage with bike trips. The waterway is 53 kilometres long, following partly the Morava, partly artificially made canals with a multitude of movable sluices, 14 lock chambers, and other water constructions. There are 23 bridges crossing the waterway. From Otrokovice to Skalice, it is possible to navigate fluently; the voyage to Kroměříž is currently blocked by the lack of a planned Bělov Sluice lock chamber. However, you can get to the place following a decent bikeway...



The Ride of the Kings at Vlčnov

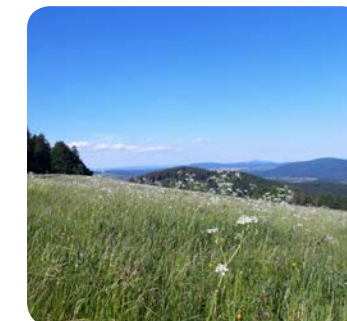
## 5 THE WHITE CARPATHIANS

+420 773 784 110  
info@bilekarpaty.net  
bilekarpaty.net



Follow the traces of the Žitková Goddesses – women endowed with magical powers; get to know the places of the biggest air battle in Moravia; find out what enchanted Charles, Prince of Wales... Pay a visit to the White Carpathians, a biosphere, UNESCO-protected reserve, the mountain range situated in both sides of the Czech-Slovak border. You will be amazed by charming flowery meadows, which are the richest in orchids in central Europe. The highest peak is Velká Javořina (970 metres). The White Carpathians comprise five micro-regions – the Dolnáčko, the

Hornáčko, the Moravské Kopanice, the Luhačovice Woodlands, and the Jižní Valašsko regions, which differentiate not only in dialects, but also in the folklores (the famous Ride of the Kings, the Kopanice People Feast, the International Folklore Festival at Strážnice, the St Nicholas Annual Fair at Valašské Klobouky). Even folk architecture was preserved here (log houses), and its varieties (Dušan Jurkovič's works). When strolling through the White Carpathians, stop at the local organic farmers' farmsteads – they will be glad to offer you some of their crops to taste.





“Kroměříž, Kroměříž, Kroměříž is a nice town, there is a building made of stone...” – there go the lyrics of the Haná folksong. Today, it is not clear anymore which of the famous buildings was on the author’s mind. The town has earned the nickname of the Haná Athens, and belongs to the most visited places in the Czech Republic. Since time immemorial, the place has been connected to history rich in events, cultural traditions, fertile grounds, and to reverence of the Olomouc bishops, who chose the town as their summer residence, this having substantially influenced its appearance and significance. The UNESCO monuments (the Archbish-

op Palace, the Under-chateau garden, the Floral Garden) are not the only reasons for visiting the town. You can remember the faded glory of Kroměříž’s minting while searching for the Bishop Bruno’s treasure. In the bishopric mint, you will produce a coin with your own hands as a souvenir, and free of charge. Or, you can taste the delicious beer from three local breweries, or the original mass wine from the 13th-century historical wine cellars. Take a stroll in the tortuous lanes and shadowy arcades, stay at one of the stylish, palace-viewing hotels. You will get encircled by an unrepeatable atmosphere, and you will desire to stay.



7

THE HOSTÝN HILLS AND HOLY HOSTÝN

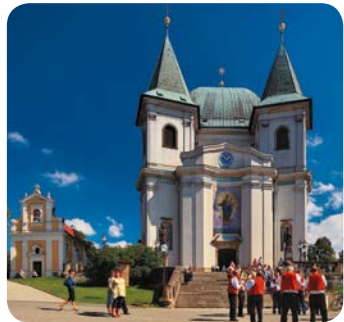
+420 573 381 693

matice@hostyn.cz

www.hostyn.cz

The Hostýn Hills belongs to average-sized mountain ranges, but they are popular thanks to the multitude of experiences that they offer. Hostýn, with the basilica of the Ascension of the Virgin Mary and Dušan Jurkovič’s Way of the Cross, is a traditional pilgrimage site. According to a well-known 13th-century rumour (1241), the locals were hidden there during the raid of the Tartars. However, they were suffering from a lack of water, so they prayed to the Mother of God. Through her intercession, a spring has occurred, and a violent storm forced the Tartars to

retreat... The region is rich in cultural monuments, ranging from the most ancient ones (remnants of the Celtic oppidum on the Hostýn hill), via ruins of medieval castles (Lukov, Obřany), up to technical monuments of the present day (the Rajnochovice splash dam). Hostýn is situated on the backbone range “Hostýn Highway”, which is a 52-kilometre set of the marked routes, modified for cross-country skiers in winters and for bikers in summers. Go against the course of time, for example to the castle ruins or to a brand-new viewing tower on the Kelčský Javorník hill.



The capital of South-Eastern Moravia, situated on the border of the Wallachia, Haná, and Slovácko regions, was made famous in the first half of the 20th century by Tomáš Baťa, founder of the local shoe factory – thanks to the modern organization of production, and the care for employees and the city as the whole. The factory precinct and residential quarters are a conservation area nowadays. On the guided tour, you will observe the 21st management building of the company – the first skyscraper in Europe, the 14|15 BAŤA INSTITUTE, or his villa. You will be enchanted by

the functionalist architecture, which is omnipresent in the city. However, Zlín, it is not only Baťa. There has also been a long tradition of the film industry, which you can get to know at the Zlín Film Festival. The screenings cover more than 300 films. Fast cars lovers will, on the other hand, find their object of interest at the Zlín Barum Czech Rally. Parents and children will fall in love with the local ZOO, which offers guided tours or commented feeding sessions. And what is also worth seeing is the 18th-century fairy-tale chateau – Lešná.



9

VIZOVICE

+420 577 599 110

infocentrum@dkvizovice.cz

www.icvizovice.eu

The town of Vizovice is situated east of Zlín, and it boasts about being the gate to Wallachia. There are several reasons for not missing it on your way. There is a Baroque 18th-century chateau with a French garden, an English garden with a lake and an amazing chocolate plant in the front of the chateau. At the Rudolf Jelínek’s company Distillery Land visitors’ centre, you’ll learn something about the history of Vizovice plum brandy. During the tour, you will discover not only the way of turning fruit into spirits, but also their tastes. In the distillery

area, one of the greatest open-air festivals in the Czech Republic is held – the Vizovice Blackthorn Harvest. It is a multi-genre cultural exhibition, which comprises performances of the cream of the Czech and Slovak pop music. The project is conceived as all-family entertainment, so concerts are supplemented by theatre shows, a cinema café, and a children’s corner. Vizovice hosts another important music event – Masters of Rock. It is mostly a presentation of foreign rock and metal bands.





## 10 THE LUHAČOVICE SPA

+420 577 133 980

www.luhacovice.cz



Vincentka, Aloiska, Viola, Elektra, Bystrica, Jaroslava... – these sound like fairy-tale names, but in fact, they are mineral springs. They rise at Luhačovice – the greatest Moravian spa centre. The spa has developed a long tradition of treating air passages, digestion, diabetes, and motion apparatus. What makes them famous is natural healing springs, favourable climatic conditions, and the pleasant environment, in which the beautiful scenery matches the peculiar architecture of spa buildings. Each hour, 15,000 litres of mineral water springs to the surface, which is the goal of

people coming there from all over the world. The genius loci inspired Dušan Jurkovič, Slovak architect, to create a unique collection of folk Art Nouveau houses. Opening and sanctifying springs, which takes place in May, is always a big Luhačovice feast. The healing springs are brought to life by colourful folk costumes, Art Nouveau costumes, veteran cars, singing and dancing, and they help to forget the worries of weekdays. Come around and get back, in these days of celebration, to the placid atmosphere of the beginning of the 20th century.



## 11 SOUTH WALLACHIA

www.jiznivalassko.cz



+420 737 701 047

betlem@hornilidec.cz

www.betlemhornilidec.cz

Succumb to the temptation of South Wallachia (the region among Vsetín, Vizovice, and Brumov-Bylnice), and get tempted by idiosyncratic folk culture in the mountain-encircled villages and by nice people who are happy when you are interested in their jobs and lifestyles. Set off, for instance, for Valašské Klobouky to see the traditional December annual fair. You'll experience St Nicholas' round with "genuine" devils, and discover products of ancient crafts, which are brought back to life by gingerbread bakers, lacers, coopers, and drapers. At Horní Lideč, which is not very far,

observe the unbelievable mechanical Nativity scene. The local craftspeople made it, altogether with their Slovak friends, in impressive parameters – it covers the area of 170 m<sup>2</sup>, and 65 figures out of the total 220 are set in motion. In cosy shops, taste the local specialty – the plum brandy, and as to eating, grab a piece of lard or a hot "kyselica" (the dense sour soup with cabbage and sausages). Restored in forces, discover romantic places (the Devil's, and the Lačnov Rocks); the rocks serve as training walls for elementary and intermediate climbers.



## 12 THE BEČVA BIKEWAY

+420 585 319 472

info@cyklostezkabecva.com

cyklostezkabecva.com



If you like to discover the world from a bike, don't hesitate to try a new Bečva bikeway (160 kilometres). It'll lead you through an amazing valley of the two Bečva rivers – the Rožnov and the Vsetín ones. In the passage along the Vsetín Bečva (Velké Karlovice – Valašské Meziříčí; 58 kilometres), you will bike through the beautiful scenery of the Hornovsacko region and Vsetín. The second part follows the stream of the Rožnov Bečva (Horní Bečva – Valašské Meziříčí; 31 kilometres), and it goes through picturesque Wallachian villages and the tourist-beloved town of Rožnov pod Radhoštěm. The third

part runs in between two confluences – the Vsetín Bečva–Rožnov Bečva one, and the Bečva–Morava one (Valašské Meziříčí – Tovačov; 70 kilometres), chasing you from the Wallachian hills through a tight Moravian Gate to the Haná plains near Přerov. When on the route, take breaks (the Zbrašov Aragonite Caves, the Hranice Abyss), pay visits to castles and chateaus (Lešná, Valašské Meziříčí, Vsetín, Helfštýn), and folk architecture sites (the Rožnov's Wallachian Open-Air Museum, Velké Karlovice). If you enjoy some company, enrol in bike tours.



## 13 THE WALLACHIAN OPEN-AIR MUSEUM

+420 571 757 111

muzeum@vmp.cz

www.vmp.cz



When at home, do you use "pantok", "valcha", or "ciplík"? Do you bake "frgále" or "baběny"? Dunno what I am speaking about? Then you haven't visited the Wallachian Open-Air Museum at Rožnov pod Radhoštěm (established in 1925). There, you would get answers from each little girl. "Skanzen", as the Museum is incorrectly referred to, enlivens Rožnov all year long. Various folk events and festivals (the Ethnographic Summer, the Rožnov Feasts, the Wallachian Annual Fair) are held there, but the daily operation is almost as interesting as those as well. The Museum doesn't

want to end up as a dead storehouse, but struggles to be a living place, where songs are sung, cooking is done, work is in operation, and the feasts are celebrated. Nowadays, the vast area comprises several tour zones (the Wooden Town, the Mill Vale, the Wallachian Village). There are hundreds of thousands of people streaming to the Museum annually, who want to get to know the traditions of crafts and folk architecture, but also to climb up the mythical mountain of Radhošť or to the Pustevny hill. Join them this year.





## THE JAVORNÍKY AND THE KOHÚTKA

+420 571 451 790  
info@kohutka.cz  
www.kohutka.cz

The Javorníky Hills form a natural border between the Czech Republic and Slovakia, being part of the Beskydy Mountains Natural Reserve (the Czech side), and the Kysuca River Region Natural Reserve (the Slovak side). The Galov Meadows, with frequent occurrences of orchids, orchidaceae, and other rare plants, are one of the most important protected areas. In many places, there are mineral springs to be seen. The highest peak is the Great Javorník (Velký Javorník; 1,071 metres), situated in Slovakia. What tourists are particularly fond of is the Kohútka district. In winter,

it functions as a ski resort with nine multiple-difficulty ski slopes, satisfying even the most demanding skiers. In summer, Kohútka flourishes with hiking and bike trips. Even elementary tourists will manage to walk a range hike over the Javorníky Hills, and even rare mountain birds can take a very light stroll on the Kohútka-Portáš route. However, everybody needs to have a taste of the local specialty – blueberry yeast cakes. They do taste like your grandma's ones. For those, some hikers are willing to come here on foot.



## 15 VELKÉ KARLOVICE

+420 571 444 039  
icentrum@velkekarlovice.cz  
www.velkekarlovice.cz



If you want to see the Wallachian lifestyle, head for the village of Velké Karlovice. As to the length, it is an endless municipality at the foot of the Javorníky Hills and the Beskydy Mountains. Just potter around a little bit, through the charming landscape and pastures. Stop at sheep herds and their shepherds, pay a visit to a mountain house where they still run the traditional husbandry, and talk to the locals for a while. They may tell you the legend about the secret-encircled lake, which inspired Karel Jaromír Erben... However, the time didn't stop there. Velké Karlov-

ice are renowned for the events that attract people for cities and far away alike. Try the Karlovice Culinary Festival – you will taste many a specialty at local pubs and mountain hotels. During the meals, you can go for a walk (or a ride) on the Bečva bikeway, or to take a little train, a horse cart and a historical bus. The part of the event is also a popular contest for the best Wallachian "frgál" cake and sausage. However, what sportspeople opt for mostly is the Valachy Tour – a series of attractive, multi-discipline races for people of all ages and body shapes.



## South Moravian Region



The Southern Moravia Region comprises five tourist areas (the Moravian Karst, the Znojmo and the Dyje River regions, the Pálava region and the Lednice-Valtice area, the Slovácko region, Brno and the surroundings). All of them are popular with tourists. The Moravian Karst, with its attractive hilly scenery and preserved landscape, offers an experience of observing cave compounds and abysses. It is especially suitable for bikers and hikers. The southern part of the region is mostly a flatland with fields, meadows, vineyards, and remnants of riparian forests along the Dyje river.

The Dyje River Region National Park is a preserved river valley encircled with deep woods. The landscape appeals mostly to water sports lovers, anglers, and history fans (Nové Mlýny, Pálava, and the Lednice-Valtice area). The unique biosphere reserve of the White Carpathians is valuable especially for its preserved landscape. However, Brno should not be out of your scope, either. The city is a genuine cultural and historical centre, and history lovers should not leave the region without paying it a visit. The UNESCO-listed Tugendhat Villa is a unique monument of interwar mod-

ern architecture. Other UNESCO-listed sights include the Lednice-Valtice area (a complex of woods, meadows, and waters harmoniously connected to the chateau buildings of Lednice and Valtice), the Ride of the Kings (an ancient ritual of royal parades on decorated horses at Strážnice), and the Slavic Dance of Recruits (the male skip dance). The visit in South Moravia is attractive out of many reasons (St Catherine Rotund in Znojmo, the Pavlov ArcheoPark, Baťa Waterway, the Pernštejn castle, the Brno Exhibition Grounds). The region is also renowned for its viniculture routes,

traditions and folklore, which gives the region a distinctive flavour. Most tourist attractions are nowadays reachable on bikes, too (the Moravian-Silesian Highway, Greenways, the Amber Route, the Brno-Vienna Bikeway). The local technical monuments and motor competitions (the Masaryk Circuit) provide the region with a specific atmosphere. However, families and kids won't get the raw deal, either. In South Moravia, you can have a perfect swim, go for castle and chateau trips, or practise sports. So feel free to get some inspiration from the following lines.





## 1 THE LEDNICE-VALTICE COMPLEX



+420 734 256 709 [tic@valtice.eu](mailto:tic@valtice.eu) [www.valtice.eu](http://www.valtice.eu)

The Lednice-Valtice Area comprises many places of grace; discover the charm of the largest artificially designed landscape in Europe, which was added to the UNESCO List in 1996 and covers the area of circa 280 km<sup>2</sup>. The concept of the landscape was created under the reign of the Lichtenstein counts, and it comprises exquisite chateau residences at Valtice and at Lednice, decorative gardens, valuable small-scale garden monuments, groves and ponds. You may start your pilgrimage at Valtice, city which lies on the borderline of Moravia and

Austria and famous for its fine wine and sights. The landmark of Lednice is a chateau with Janohrad ("Johnsburg") – a replica of a medieval ruin), a park, and the Minaret (it is almost 60 metres tall, and if you climb to the top, the environment will award you with a view of the park, the Pálava region, the White Carpathians, and even the top of the spire of St Stephen's Dome, Vienna). You can continue, on foot, to take the tourist routes heading for Břeclav (the green one), to Valtice in the south, or to the New Mills Dam to the north-west (the red one). It's worth it!



## 2 THE MORAVIAN KARST

+420 516 413 575  
[info@caves.cz](mailto:info@caves.cz)  
[www.caves.cz](http://www.caves.cz)



If you want to cool down in scorching summer, or escape the havoc of the surrounding world – we have a solution for you. Descend into the depths of the Moravian Karst caves, which is our largest and most important karst area. There are more than 1,100 caves, out of which five are open to public. It is the Punkva Caves that are the most renowned; they are famous for an underground boat ride on the Punkva rivulet, which brings you to the very bottom of the Macocha abyss. In the Catherine Cave, you'll see the largest karst dome accessible to public, and unique cane-shaped stalag-

mites. The Balcarka Cave possesses rich colourful dripstone decorations. The Sloup-Šošůvka Caves comprise massive corridors, domes, and deep underground abysses. A completely different type of cave is represented by the Drainer (Výpustek) – a colossal, preserved underground military shelter, which has already gone out of use. When you reach the ground once again, stop at the Marian temple "Baptism" (designed by Giovanni Santini). Thanks to its interior decorations and magnificent architectural mastery, it belongs to the most precious baroque monuments in Moravia.



## 3 THE BRNO VILLA QUARTETO



+420 515 511 015 [info@tugendhat.eu](mailto:info@tugendhat.eu) [www.tugendhat.eu](http://www.tugendhat.eu)  
+420 778 545 993 [vila@npu.cz](mailto:vila@npu.cz) [www.vila-stiassni.cz](http://www.vila-stiassni.cz)

Are you builders? Are you fond of modern architecture, or you just like visiting other people's homes to get inspiration? So then it's almost a duty for you to see Brno's Tugendhat and Stiassni villas, which, with two more (Lów-Beer and Jurkovič), form the Brno Villa Quarteto. The villa of Mr and Mrs Tugendhat, built in 1929-1930 by architect Ludwig Mies van der Rohe, is the only modern architecture monument in the Czech Republic placed on the UNESCO List. It is a unique work of art, as far as construction, space arrangement, interior equipment, technical background, and landscape

fitness are concerned. In the interiors, which are furnished with replicas of the original furniture, you'll find precious materials – Moroccan onyx, Italian travertine, Asia woody plants. The Stiassni Villa, also known as the Government Villa, offers visitors a display of luxury and grace of the First-Republic housing. Alfred Stiassni, a textile factory owner, engaged Ernst Wiesner, a Brno architect, who carried out the construction in 1927-1929. Enter and admire harmony and luxury of the interior, which grows, through the terrace, into an astonishing garden.







## 5 THE ROTUNDA OF ST. CATHERINE, ZNOJMO UNDERGROUND

+420 515 282 211 ✉ info@muzeumznojmo.cz 🌐 www.muzeumznojmo.cz

"Znojmo, Znojmo, I can see you twice..." – there go the lyrics of a popular song. Whilst the author is enchanted by the temporary values, you can feed on dainties that know no change over the course of history. What is especially memorable is Saint Catherine's Rotund, an incredibly preserved building of the Přemyslid princes. Built in the 11th century, it was later furnished with singular interior paintings. It is, in fact, a medieval comic book, which portrays the Přemyslid dynasty in mythical stories, displaying Christian scenes, too. The rotund was built on the

rock hovering over the Dyje, and the view it gives covers Austria; however, the town offers an experience from a different perspective, too. This is the Znojmo underground excursion. Circa 27-kilometre corridors, built by the burghers since the 13th century as cellars, storerooms, and shelters, offer two excursion tours. Choose a peaceful promenade with some history talk, or an adrenaline-filled experience, when you crawl through the route on all four, with the forehead light as the only source of illumination in the surrounding pitch-dark.

## 4 MIKULOV

+420 519 309 014 ✉ rmm@rmm.cz 🌐 www.rmm.cz



Be our guest in the region of vineyards, the sun, and ancient history, and discover the pearl of South Moravia – the town of Mikulov. Learn the dramatic history of the place and of the Dietrichstein House, thank to whose endeavour the manor flourished for a couple of centuries. Climb up the rock cliff to the baroque-style Mikulov Chateau, today's seat of the Mikulov Regional Museum, where the largest Czech exhibition on viniculture is worth seeing, as well as the original chateau library. In the town centre, go through ancient lanes, which meander through the former ghetto, and

a couple of uniquely preserved Jewish monuments. There is a synagogue, a cemetery with more than 4,000 graves, and mikvehs – Jewish ritual baths. Holy Hill, one of the oldest pilgrimage places in South Moravia, hovers over the town; you will reach taking a nice stroll on the way of the cross. There are plenty of bikeways, and they are lined with wine cellars. Stop and taste the local delectable wine. Viniculture and local cuisine is intensively supported by the town of Mikulov; the most visible event is the Pálava Vintage, which takes place every second September weekend.



## 6 MORAVIAN WINE TRAILS

+420 515 903 121 ✉ eva.kvapilova@nap.cz 🌐 www.stezky.cz



The Moravian Viniculture Routes form a coherent network of marked bike-ways on the territory of ten viniculture areas of South Moravia. They are 1,200 kilometres long, and are connected by the backbone Moravian Wine Route, leading from Znojmo to Uherské Hradiště. Get on your bike and journey through the picturesque scenery of South Moravia to search for local charms. The routes (they are part of the Greenways group) offer both long and short bike trips, during which you will discover the most beautiful historical and natural monuments of the re-

gion. And this is not it. Throughout the year, there are a lot of public-oriented events and trips on the route. There is the popular bike series "Through the Country of Wine", and various feast and viniculture celebrations. Following the viniculture routes, you ride your bike not only to get to know culture, past, and beautiful nature, but also to taste the local wine and meet people for whom viniculture is both a lifelong hobby and a lifetime lot. So... check the shape of your bike, and on your saddles!



## 7 ARCHEOPARK PAVLOV

+420 519 322 126 ✉ archeopark@rmm.cz 🌐 www.archeoparkpavlov.cz



You may have wanted, as kids, to travel through time and to see prehistory, but it was impossible, so you gave up your dream. The place where you can revive it has been created recently, and connects prehistory with modern architecture and technologies – the Pavlov ArcheoPark. Get back in time, discover archaeological sites on the slopes of the limestone range of the Pálava hills, which represents an important residential area of the Homo sapiens, dating back 30,000 years. You will be enchanted by the audio-visual exposition, which is placed on the very Pavlov I archaeological site. How-

ever, the traditional museum exhibition is not left aside, offering a wide range of exhibits covering all life situations in the prehistory of the Pálava Region – going through the settlement lifestyle to the rites and burials. The ArcheoPark shows the public the most important items brought about by the local field research. The cream of the exposition is an archaeological deposit of mammoth bones, which is placed on the very location of its discovery and presents both the ice-age fauna, and actual archaeological research. The atmosphere of the site is exceptional.







9

## STRÁŽNICE – FOLKLORE AND THE OPEN-AIR MUSEUM

+420 518 306 611 skanzen@nulk.cz www.skanzenstraznice.cz

Folk culture has been coupled with Strážnice for centuries. Annually last June weekend, the Folk Culture National Institution holds the International Folk Festival called “Strážnice”, which displays not only the folklore in the natural form, but also its stylized variants. Recently, the traditional folk festival has been enriched by many activities and places. In the Strážnice Open-Air Museum, you can have a look at countryside life, and you will get to know the changes time made to the village housings. In a large outdoor exhibition, admire buildings

from the Moravia's region of Kopanice and the region of Luhačovice Woodland, water technical structures, vineyard structures, or areas of meadow management. A new thing among the experience tours is a detective game, during which you solve a criminal case set in the countryside at the turn of the 19th and the 20th centuries. In the museum, there are many living domestic animals, which are, for some kind, as exotic as those to be seen at ZOOS. So – don't hesitate to pay us a visit!



8

## THE BAŤA CANAL

+420 518 325 330  
ic@batacanal.cz  
www.batacanal.cz



Almost everybody that has ever read Zdeněk Jirotka's Saturnin longs for a houseboat and a serene river ride within the reach of a town and its pastimes. The Baťa Waterway, historical canal built in 1934-1938, did not originally serve these tourist purposes. The waterway used to ensure material transport, and helped with irrigation and ground water level rise. Nowadays, however, it is a place of ridings for rowers and ships of all sizes. The canal splits with the river at Spytihněv and rejoins it at Staré Město. At Veselí nad Moravou, it leaves the river again, just to cross it uniquely at

Vnorovy and to continue majestically to Sudoměřice. Nowadays, there are 13 lock chambers on the stream, and the voyage is a solely tourist matter. The 53-kilometre journey will give you an amazing time off. You may observe the landscape from aboard, or to pamper yourselves in the dainties of the local fish cuisine. For the experienced, there are small engine boats, which may be borrowed within a given time, and large personal ships for trip voyages, and, last but not least, residential boats for multi-day stays. Ahoy on the Morava!



10

## THE PERNŠTEJN CASTLE

+420 566 566 101  
pernstejn@npu.cz  
www.hrad-pernstejn.eu

Seeing is believing! All descriptions and characteristics are limping, if you compare it to the original. The “King of Moravian Castles” towers from the deep verdure, resembling a fist in rage, and tempts visitors by its architectural colourfulness and romantic scenery. Originally a simple Gothic castle was built by the Medlov noble family (the Pernštejn house) in the 13th century. Over the years, it was gradually accustomed to the luxurious and comfortable lifestyle. A Renaissance palace was built, which has remained in its original beauty, with no further substantial

changes. As time passed, baroque, rococo, and neoclassical residences were added, and in the 19th century, the castle was enriched, in its interiors, with Romanticist features. It is thus a perfect example of multi-styled and multi-period architecture. For adults, there are two tour sophisticated routes. For kids of the ages 4-6, there is a detective-like quest for mysterious clues, which lead to simple entertaining tasks. The kids who pass will see the White Lady as a reward. You don't need to get scared – it is virtual lady of the best manners possible.



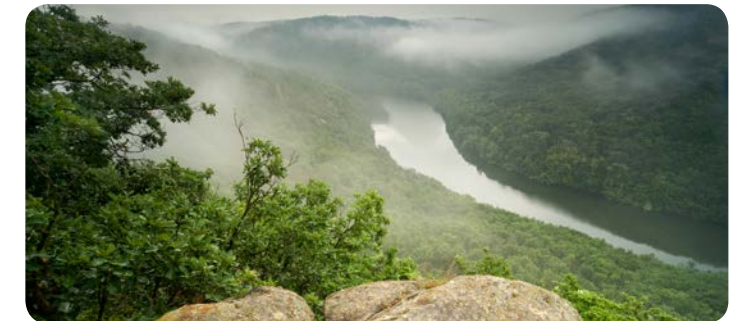
11

## PODYJÍ NATIONAL PARK

+420 515 282 240 info@nppodyji.cz www.nppodyji.cz

Civilisation drives us to cities, and that's why it is pleasant to come back (at least for a weekend and a holiday) to nature and admire its diversity. If you are just in the middle of planning your “Journey out of Town”, choose for your destination the Dyje River Region National Park. It is situated between Znojmo and Vranov nad Dyjí, alongside the border with Austria, and it is the smallest national park in the Czech Republic (the area of 63 km<sup>2</sup>). The Dyje River canyon creates multiple meanders there, mostly deep carved into cliff walls, and it is a representative of

a rarely preserved river valley, which literally calls for walks, bike trips, or boat rides. Both up in the saddles, and on foot, you will discover a colourful range of plants and animals. You may go for a landscape tour with qualified guides, who will help you find the most beautiful recesses and name all plants and animals you will come across. This may come in handy especially if you take kids with you. In case of children's prying questions, parents may sometimes fall short of their expectations...







## 12 THE MORAVIAN KARST SINGLETRAIL

+420 731 462 595 [info@singlekras.cz](mailto:info@singlekras.cz) [www.singlekras.cz](http://www.singlekras.cz)

A kingdom for a bike! And especially in the Moravian Karst... has been added on the board at the Olšovec car campsite – supposedly, a luckless person was giving way to their desperation. Yes, if this is the place of your holiday, don't leave your bikes at home. On the three tours of different levels of difficulty – the so-called singletrails –, all family can prove their biking skills. Singletrails are one-way natural bikeways which are built, according to a precise set of methods, by the experienced experts in the local terrain. In the hills and woods of the Moravian

Karst, they never take much of a direct line, or much of going up and down. The trails (28 kilometres in full) are built in such places so as to alter tilted ways and terrain waves. As to the sights, stop, for instance, in one of the karst caves or at the Macocha abyss. In the base car campsite, there is a wide range of services for all bikers: a tourist centre, a test centre, a full-sprung bike hire service, refreshments, a bike shop, a fix shop, parking lots... the reason to scrawl on boards, in case you leave something at home, has thus disappeared.



## 13 THE BATTLE OF AUSTERLITZ

[info@austerlitz.org](mailto:info@austerlitz.org)  
[www.austerlitz.org](http://www.austerlitz.org)

You probably know the Austerlitz Battle from history lessons. Do you know that it is possible to watch it with your own eyes? It is a sufficient reason for all modern history lovers to put down their books and head, in early December, for Slavkov. The battle took place on 2nd December 1805 at Austerlitz (Slavkov, in contemporary Czech), and it was Emperor Napoleon that won over the Russian and Austrian armies. The idea of organizing a memorial event at the occasion of the 200th anniversary of the battle originated in 1998. The Austerlitz 2005 project was born, which struggled to promote the

event. Besides the events, the web [austerlitz.org](http://austerlitz.org) was launched, both academic and public-oriented books were published, and three documentaries were shot. The concept proved to be successful, and the great winter memorial events have ever since been organized annually. Traditionally, the main programme takes place at Austerlitz and on the Austerlitz battlefield. If you set off on the military field, you will experience a display of battle turmoil under the Santon hill, and the reverential event at the Peace Monument, place of toughest battle fights.



## 14 THE BRNO EXHIBITION CENTRE

+420 541 151 111 [www.bvv.cz](http://www.bvv.cz)

The atmosphere of Brno, second largest city of the Czech Republic, is not created by the historical centre and surrounding monuments only; there is also the Brno Exhibition Grounds, much newer space, but matching the former in its importance for urban life. Since its creation (1928), it has served as an example of modern architecture, which puts emphasis on moderate proportions and disposition, on immaculate and audacious construction, and elaborated details. The oldest exhibition object is the 19th-century Bauer's little chateau; the Pavilion A,

built in the functionalist style, is the most famous. Several times, the area was close to decline, but people have never left it completely, so as the exhibition space, it has been functioning perfectly up to nowadays. Every year, more than fifty events take place here – such as trade fairs, exhibitions, or concerts. It is the autumnal International Engineering Fair that is the best known. However, the Grounds host cultural events, too – the regular Brno Majales Student Celebration, or concerts of great bands (KISS, the Rolling Stones).



## 15 THE MASARYK CIRCUIT AND THE GRAND PRIX

+420 546 123 300 [www.automotodrombrno.cz](http://www.automotodrombrno.cz)

The Czech adrenaline-works – there is no more fitting name for the atmosphere ruling over the Masaryk circuit. The world-class race course is to be found in the middle of the woods, in the outskirts of Brno, near the quarter of Žebětín. Every year, the Masaryk circuit hosts the Grand Prix of the Czech Republic of the MotoGP world championship, and other prestigious motorbike and car series. One of these races is BOSS GP, within which you can spot Formula 1 single-seaters. The Masaryk circuit offers all engine-holics an option for a further adrenaline experience. Except for the main track,

there is, in the vicinity of its last curve, a small track. This one is seasonally open to public, and serves for races of forceful go-karts and entertaining pitbikes. Moreover, the area comprises a multifunctional driving centre where drivers may attend slide lessons or other courses on safe driving. The single-track fans can make use of the offers made by six types of driving schools, among which each motorcyclist will choose what fits them best. The facilities are completed with a theme restaurant and a four-star GRID Hotel.





MORAVIAN AND SILESIAN TOP ATTRACTIONS

- The Moravian-Silesian Region**

  1. Dolní oblast Vítkovice
  2. The Kopřivnice Technical Museum
  3. The Hlučín-Darkovičky Fortification Area
  4. Michal Coalmine in Ostrava
  5. The Kunín Chateau
  6. The Hradec nad Moravicí Chateau
  7. The Hukvaldy Castle
  8. The Sovinec Castle
  9. Štramberk
  10. The Beskydy Mountains and Lysá hora
  11. The Jeseníky Mountains and Praděd
  12. Karlova Studánka
  13. The Těšín Silesia and Hřava
  14. The Odra Region and the Odra Natural Reserve
  15. Colours of Ostrava - The Golden Spike - The NATO Days
- The Olomouc Region**

  1. The Cancer Valley Dance Hall
  2. Rejvíz and the Mariahilf Pilgrimage Site
  3. The Rychleby Paths
  4. The Forest Bar
  5. The International Climb up the Králický Sněžník
  6. Velké Losiny Paper Manufacture
  7. The Angelarium
  8. The Olomouc Cheese Museum
  9. The Bezděkov Lavender Farmstead
  10. The Haná Venice
  11. The Litovel Brewery Excursion
  12. Šternberk – a Castle, a Monastery, and Fast Cars
  13. The Staré Město Fortress Area
  14. The Čechy pod Kosířem Chateau
  15. The Mysterious Plumlov Chateau
- The Zlín Region**

  1. Velehrad and Modrá
  2. The Buchlovice Chateau and the Buchlov Castle
  3. Uherské Hradiště
  4. The Baťa Canal
  5. The White Carpathians
  6. Kroměříž
  7. The Hostýn Hills and Holy Hostýn
  8. Zlín (not only) Baťa's
  9. Vizovice
  10. The Luhačovice Spa
  11. South Wallachia
  12. The Bečva Bikeway
  13. The Wallachian Open-Air Museum
  14. The Javorníky and the Kohútka
  15. Velké Karlovice
- The Southern Moravia Region**

  1. The Lednice-Valtice Complex
  2. The Moravian Karst
  3. The Brno Villa Quarteto
  4. Mikulov
  5. The Rotunda of St. Catherine, Znojmo underground
  6. Moravian Wine Trails
  7. ArcheoPark Pavlov
  8. The Baťa Canal
  9. Strážnice – Folklore and the Open-Air Museum
  10. The Pernštejn Castle
  11. Podýjí National Park
  12. The Moravian Karst Singletrail
  13. The Battle of Austerlitz
  14. The Brno Exhibition Centre
  15. The Masaryk Circuit and the Grand Prix

TOP MERKWÜRDIGKEITEN VON MÄHREN UND SCHLESIEN

- Die Mährisch-Schlesische Region**

  1. Dolní oblast Vítkovice und die Welt der Technologie Ostrava
  2. Das Technische Museum Tatra in Kopřivnice
  3. Das Areal der CS Befestigungsanlage Hlučín-Darkovičky
  4. Das Bergwerk Michal Ostrava
  5. Das Schloss Kunín
  6. Das Schloss Hradec nad Moravicí
  7. Die Burg Hukvaldy
  8. Die Burg Sovinec
  9. Štramberk
  10. Beskiden und Lysá hora
  11. Altvatergebirge und Praděd
  12. Karlova Studánka
  13. Das Teschner Schlesien und Hřava
  14. Die Region Poodří
  15. Colours of Ostrava, Golden Spike, die Nato-Tage
- Die Region Olomouc**

  1. Tanzsaal im Račí Tal
  2. Rejvíz und der Wallfahrtsort Mariahilf
  3. Rychlebské und Lipovské Radwege
  4. Die Bar im Wald
  5. Internationale Wanderung zum Gipfel Králický Sněžník
  6. Die Fabrik für handgeschöpftes Papier Velké Losiny
  7. Andělarium
  8. Das Museum der Olmützer Quargeln
  9. Lavendelbauernhof in Bezděkov
  10. Stadtfest Hanakische Venedig
  11. Ausflug zur Litovel-Brauerei
  12. Šternberk – das Schloss, das Kloster und schnelle Autos
  13. Die Grenzfestungen Staré Město
  14. Das Schloss Čechy Pod Kosířem
  15. Das mystische Schloss Plumlov
- Die Region Zlín**

  1. Velehrad und Modrá
  2. Das Schloss Buchlovice, die Burg Buchlov
  3. Uherské Hradiště
  4. Der Baťa-Kanal
  5. Weiße Karpaten
  6. Kroměříž
  7. Das Gebirge Hostýn und St. Hostýn
  8. Zlín (nicht nur) von Baťa
  9. Vizovice
  10. Der Kurort Luhačovice
  11. Die südliche Walachei
  12. Bečva-Radweg
  13. Walachisches Freilichtmuseum
  14. Javorníky und Kohútka
  15. Velké Karlovice
- Die Südmährische Region**

  1. Areal Lednice-Valtice
  2. Der Mährische Karst
  3. Das Brünner Villaquartett
  4. Mikulov
  5. St.-Katharina-Rotunde, Znaimer Untergrund
  6. Mährische Weinwege
  7. Archäopark Pavlov
  8. Der Baťa-Kanal
  9. Strážnice –die Folklore und das Freilichtmuseum
  10. Die Burg Pernštejn
  11. Der Nationalpark Podýjí
  12. Der Mährischen Karst Singletrail
  13. Die Schlacht bei Slavkov
  14. Das Brünner Messegelände
  15. Der Masaryk-Ring und Grand Prix

