

# Olomouc Region

## **Paths of beauty and well-being**



### **TOP TIPS & ROUTES**



[www.ok-tourism.cz](http://www.ok-tourism.cz)  
[www.jeseniky-tourism.cz](http://www.jeseniky-tourism.cz)  
[www.strednimorava-tourism.cz](http://www.strednimorava-tourism.cz)

European Union  
European Regional Development Fund  
Partner for your development



## Paths of beauty and well-being

The publication you are holding will introduce you to the treasures and attractions of two tourist destinations in the Olomouc Region: Central Moravia and the Jeseníky Mountains. **Central Moravia offers unique monuments, Hanakian traditions, and the City of Olomouc, the administrative and cultural centre of the region, while the mountain landscape of the Jeseníky Mountains is the perfect spot for relaxation, sports, and recreation.** In the following pages, you'll discover the links between the two destinations – paths that will bring you experiences in the form of unique beauty and a variety of relaxing holiday activities. So choose your path and welcome to the Olomouc Region! To learn about everything the Olomouc Region has to offer, check out [www.ok-tourism.cz](http://www.ok-tourism.cz)



### Olomouc Region Card – Tourist discount card

Get to know the Olomouc Region for much less with the Olomouc Region Card. The card offers free or discounted entry to nearly 200 sights in the region.

Check out [www.olomoucregioncard.cz](http://www.olomoucregioncard.cz) for more information.

### Content :

The most beautiful treasures of Central Moravia . . . . .	4
Olomouc Pearl in the heart of Europe . . . . .	6
Let yourselves be tempted by a diverse selection . . . . .	8
Biking, golf, and tennis... . . . .	10
Enjoy the variety . . . . .	12
Wandering through nature . . . . .	14
Linking health and relaxation . . . . .	16
Culinary delights and traditions . . . . .	18
You'll never be bored. . . . .	20

The Jeseníky Mountains	
Untouched natural paradise . . . . .	22
Hiking in the mountains . . . . .	24
Experiences and adrenaline . . . . .	26
Skiing for everyone . . . . .	28
Winter fairy tale . . . . .	30
Witch trials and more. . . . .	32
What you'll find nowhere else . . . . .	34
The Jeseníky Mountains	
healing mountains. . . . .	36
For locals and tourists alike. . . . .	38

Published by: Olomouc Region  
Jeremenkova 40a, 779 11 Olomouc, 2014

E-mail: [tourism@kr-olomoucky.cz](mailto:tourism@kr-olomoucky.cz), [www.kr-olomoucky.cz](http://www.kr-olomoucky.cz)

Designed, written, and prepared by: m-ARK Marketing a reklama s.r.o.

Železniční 4, 779 00 Olomouc, [www.m-ark.cz](http://www.m-ark.cz)

Photography by: m-ARK Marketing a reklama s.r.o., I. Netopil

Map by: Jan Machovský, Print: Printo Ostrava



# The most beautiful treasures of Central Moravia



CENTRAL MORAVIA

CULTURAL TOURISM

**Central Moravia welcomes visitors with the** wide-open gates of its fairy-tale castles and châteaux. The region features an extraordinary concentration of these unique castles and châteaux. There is a different event every weekend. The many festivals, fairs, and fencing tournaments make these ideal destinations for short and longer stays alike. We present five destinations here, but other châteaux such as Plumlov, Čechy pod Kosířem, and Úsov are also definitely worth visiting.

## Tip 1:

### **Bouzov Castle**

Bouzov Castle is the king of fairy tales and looks like a medieval seat – which is why it is frequently used for filming. During peak season, the castle offers fascinating tours and exciting events.

## Tip 2: Tovačov Château

Don't miss the Tovačov Château when you visit Central Moravia.

The truly exceptional view from the nearly 100-metre tall "Graceful Tower" showcases various bodies of water and the woodland meadows surrounding Tovačov. The Moravian Bike Route runs along ponds from Olomouc to Kroměříž and further to South Moravia.



## Tip 3: Šternberk Castle

Works of art, a rare collection of wooden sculptures, and a unique set of tiled stoves are some of the highlights of this castle. If you come to the town in June or September, you'll experience the thrill of the famous Ecce Homo motor race.



## Tip 4:

### **Náměšť na Hané Château**

When you feel the need for silence and relaxation, visit this French-style Classicist château. It is located in the centre of a circular park, and houses unique collections.

## Tip 5: Helfštýn Castle

– Located near the town of Lipník nad Bečvou, the medieval Helfštýn Castle charms tourists with its exceptional size. During peak season, a range of diverse events are held at the castle, including Hefaiston, the famous international gathering of blacksmiths held every August. You can reach the castle by car; below the castle you'll find a high ropes park that is fun for all ages.





# Olomouc

## Pearl in the heart of Europe



### Tip 1:

#### Religious monuments

Given the nearly 1,000-year-old history of the Olomouc bishopric, religious monuments dominate the city's attractive environment. One such monument is the Cathedral of St. Wenceslas, the main church of the Olomouc diocese which can hold up to 5,000 people.

No other city in Moravia will charm you as much as Olomouc with its impressive history and 100,000 inhabitants.

#### **It is a city of palaces, churches, and Baroque fountains.**

In addition to rare monuments and romantic hideaways, the city offers several unique cultural experiences and entertainment. Discover them for yourselves!

### Tip 2: Holy Trinity Column – a UNESCO monument

The significance and number of Baroque monuments in Olomouc has given rise to the phrase “Olomouc Baroque”. The top monument is the Holy Trinity Column, which is listed among the UNESCO World Heritage Sites due to its extraordinary dimensions and the complexity and scope of its sculptural decorations.



### Tip 3: Svatý Kopeček

Looming over Olomouc, Svatý Kopeček is one of the most popular outing and pilgrimage destinations of the region. It provides ideal conditions for hiking, biking, and relaxation. The dominant feature is the Church of the Visitation of the Virgin Mary from the 17th century, which was visited by Pope John Paul II.

### Tip 4: Olomouc Forts

In the past, Olomouc was a town within a fortress. The fortifications were under construction for hundreds of years and these works culminated in the 19th century with the building of a unique ring of forward sconces. You can visit many of the remaining buildings.



### Tip 5: Original museums

Olomouc is a city of remarkable museums. The Archdiocese Museum is the only museum of its kind in the Czech Republic (photo). The Veteran Arena is the largest private yet publicly accessible museum of vintage cars; the Regional Museum in Olomouc houses more than a million items, and is thus among the largest museums in the Czech Republic.





# Let yourselves be tempted by a diverse selection



CENTRAL MORAVIA

CULTURAL TOURISM



Each region is characterised by sites that **demonstrate its uniqueness**. Central Moravia is full of such sites. You will stand in awe before the skills of the Czech nation. Come and indulge yourselves with the wide range of monuments, and take your experiences home with you, as hundreds of thousands of others have done before you.



**Tip 1: Čechy pod Kosířem**  
A village near Prostějov with a chateau surrounded by a romantic park and two museums. The Firefighters' Museum is one of the largest firefighter museums in Moravia, and the Museum of Carriages and Lanterns is the only museum of its kind in the Czech Republic.



**Tip 3: Uničov Šatlava (Manor Jail) The penal museum**  
The Royal City of Uničov is dominated by a neo-Renaissance town hall, and the former jail building is home to an interesting exhibit, the Prison Museum.



**Tip 4: Příkazy Hanakian open-air museum**  
The museum features an original Hanakian pub and an exhibition of tools, machines, and toys. The open-air museum is part of the Rural Conservation Area.



**Tip 5: Šternberk Exhibition of Time**  
A cutting-edge interactive exhibit where you can immerse yourselves in space and time. You will understand the differences between calendars in different cultures and the development of the oldest clock, as well as the principles of time measurement.

## Tip 2: Úsov Hunting-Forestry Museum

The Úsov Chateau offers a hunting-forestry museum truly unique in Central Europe. It exhibits nearly 10,000 stuffed exotic and local animals, hunting and poaching weapons, and other items.





# Biking, golf, and tennis



CENTRAL MORAVIA

ACTIVE TOURISM

## Tip 1: Biking

Central Moravia has a route to suit everyone. The route choices are many: you can ride along the beautiful route from Olomouc to Šternberk (also suitable for in-line skaters) or try one of the more difficult bike trails leading to the surrounding hills.

## Tip 5: Golf

Central Moravia offers several golf courses. For instance, there is an 18-hole golf course with a driving range and club-house in the slightly hilly terrain near the village of Véska.



## Tip 2: Bečva Bike Trail

The Bečva Bike Trail is an ideal opportunity to experience the Moravian Gate, which connects Central Moravia with Moravian Wallachia and Silesia. At 160 kilometres in length, the trail leads along the River Bečva and links Přerov, Lipník nad Bečvou, and Hranice all the way to Wallachia.



## Tip 3: Adrenaline Rush

Adrenaline lovers can take advantage of the high rope centres or bouldering walls. There are also the exciting bobsled tracks and tandem jumps at the largest centre in Central Europe.



## Tip 4: Where Wimbledon winners start out

Central Moravia, Prostějov, and Přerov are well-known birthplaces of tennis talents. Some of them have reached the top in their tennis careers.



Central Moravia is not only a region full of monuments and sights. It also offers an **attractive range of summer activities**. There are two long-distance bike trails and gradually developing bike trails for families with children. You can also play golf or tennis in a renowned tennis school where Wimbledon winners are born. The adventurous can experience adrenaline if they try the bobsled track or a tandem jump.



# Enjoy the variety



## Tip 1: The Hanakian "Mont Blanc"

Near Čechy pod Kosířem, there is a 28-metre-tall modern observation tower on top of the Velký Kosíř Hill (the so-called Hanakian "Mont Blanc"). From here, you can observe the flat region of Hanakia, the Drahaný Highlands, and the silhouette of the Nízký Jeseník mountain range. There are many viewing spots in Central Moravia (e.g., Olomouc, Prostějov, Uničov) and the entire region is interwoven with a network of marked hiking trails.

**Discover the charm of Central Moravia** while hiking in the region. Go for romantic walks to observation towers or experience raft-sailing; lovers of horses and agrotourism will also find their ideal vacation in the region. You can partake in a wide range of water sports and new entertainment and "edutainment" parks that are not only for children. Take your pick and enjoy!



## Tip 2: Cruises on the Morava River

Raft cruises on the Morava River provide an unusual view of Olomouc and Central Moravia. Some may go on a short cruise through the historical City of Olomouc, while others may prefer a half-day trip on the meanders of the Morava.



## Tip 3: On horseback

Central Moravia is perfect for horse lovers. The local stables and ranches offer riding lessons and various rides in the countryside. The horse-riding trails link a number of intriguing places, for example in the Potštát Area.



## Tip 4: Holiday by the water

Lovers of water sports will find lots to do in Central Moravia. You can choose from among natural swimming pools and water parks across the region, for example in Olomouc.

## Tip 5: Adventures for Children

The region is filled with fun activities for children. Go-Kart tracks, high ropes centres, and a functional model of a garden railway. Currently, an exhibition entitled "The Strength of Knowledge" and an adventure world are being prepared in Olomouc.





# Wandering through nature

## Tip 1: Javoříčko, Mladeč and Zbrašov Caves

Central Moravia is extremely rich in stalactite caves. The Javoříčko Caves offer mysteriously lit giant domes, the Mladeč Caves boast the remains of human skeletons and stone tools, and the Zbrašov Aragonite Caves are the warmest caves in the Czech Republic.



**Central Moravia** boasts not only unique monuments **but also beautiful nature**. There are underground caves, a protected landscape area, parks, renowned exhibits, and forest gardens. The forest garden in Bílá Lhota, for example, was founded around 1700 and has more than 500 species of rare trees.

## Tip 2: Olomouc ZOO

The ZOO in Svatý Kopeček near Olomouc has more than 400 species of animals, including a number of true rarities. The most interesting parts of the zoo include salt-water aquariums, a walk-through pavilion of macaques, and a combined exhibit of wolves and bears. You can also experience the zoo in the form of a safari.



## Tip 4: The Litovelské Pomoraví River Basin

The waters and dry land of the Litovelské Pomoraví River Basin are a wonderful destination for unforgettable trips. The territory occupies a 3-to-8-kilometre-wide band around the Morava River between the towns of Olomouc, Litovel, and Mohelnice. You can do your own trip or use the provided services such as bikes and rafts.

## Tip 3: Sluňákov

A unique environmental project in Horka nad Moravou. The buildings and installations have been designed to encourage visitors to perceive nature with their senses and to cultivate the relationship between humans and the natural landscape of the Litovelské Pomoraví River Basin.



## Tip 5: Olomouc Flora

The vast Olomouc parks provide an escape from the city to the outdoors, pleasant strolls, relaxation, and also interesting places and events. These include for example the Botanical Gardens, tropical greenhouses, and the renowned Flora Olomouc Flower Exhibits and Gardening Markets.







#### Tip 1: Teplice nad Bečvou Spa

The spa, located on the banks of the Bečva River, offers attractive and peaceful green parks and, above all, high-quality services. It specialises in top-quality physical cardiotherapy for its clients, emphasising the prevention of cardiac arrests and strokes. The spa also offers therapeutic and relaxation stays.



#### Tip 2: Slatinice Spa

The spa uses sulphur springs as a natural healing source in combination with specialised medical care and top-class rehabilitation services. Services here are focused on the treatment of the musculoskeletal system, oncological diseases, and diseases of the nervous system and skin. Reconditioning stays are also available.



#### Tip 3: Skalka Spa

The spa uses the local mineral water with its unique alkaline-sulphurous composition. No other Czech spa offers the same sylvite content as Skalka, and indeed apart from Skalka it can be found only in Italy and Austria.



#### Tip 4: Wellness

At several places throughout the region, you can choose from relaxation and wellness programmes and various baths, salt caves, and ice rooms.



#### Tip 5: Beer baths

Beer baths have become an integral part of the regeneration offering of many regions. Central Moravia is no different and the selection is wide. These baths contribute to improving the immune system and harmonising body and soul.

# Linking health and relaxation

CENTRAL MORAVIA

SPA AND WELLNESS

#### Central Moravia is remarkable for its many types of spas and wellness centres.

Every year, thousands of visitors come to the Central Moravian spas, and thousands of people take advantage of the various relaxation centres and special wellness procedures.





### Tip 1: Hanakian Rides of the Kings

The Hanakian Rides of the Kings are not as famous as those in Moravian Slovakia; nevertheless, you shouldn't miss this local folklore festival. Every year, you can see the Rides of the Kings in Doloplazy and also as part of the Kojetín Feast in August.



### Tip 2: Hanakian traditions

Throughout the region there is a focus on preserving traditions. Hanakian costumes are among the most beautiful in the Czech Republic. It's worth undertaking the journey to participate in such events such as the Hanakian Wedding, Hanakian Centre of the World, and Folk Year.



### Tip 3: Renowned brewing tradition

Beer produced by the major and small breweries in Central Moravia is among the best, and does honour to the Moravian brewing tradition and the label of "Czech beer".



### Tip 4: The only original Czech cheese

Many of you will already know the full flavour and aroma of Olomouc cheese. It is the only original Czech cheese, and has the lowest fat content of all cheeses in the world.

# Culinary delights and traditions

CENTRAL MORAVIA

THE CULINARY ARTS AND FOLKLORE

During the summer season, **numerous folklore events and festivals** are held in Central Moravia. You can see beautiful Hanakian costumes and learn the local customs and the original Hanakian dialect there. You will have fun and taste specialities such as the original Olomouc cheese.

### Tip 5: Cheeses that connect nations

The modern production plant based on Moravian milk and the skills of Italian cheese-makers was established in Litovel, and the local Parmesan-type cheeses will satisfy even the most demanding gourmets. The blue cheese made near the village of Niva in the Prostějov Area is also very popular.





# You'll never be bored

Feasts, fairs, festivals, competitions. What follows is a list with some examples. There are hundreds of events. With the wide range of events held every year, you can come at any time and you'll never be bored. Take your pick! Visit [www.ok-tourism.cz](http://www.ok-tourism.cz) for more information.



## Taste Hanakia

The project runs throughout the year and offers both traditional regional products and typical Hanakian meals.

Visit one of the participating restaurants and "Taste Hanakia"!



## THE MOST IMPORTANT EVENTS IN CENTRAL MORAVIA

### April

The ceremonial opening of castles and châteaux  
Top Styl Fashion Show – Mohelnice  
Academia Film Olomouc  
Flora Olomouc – The Spring Stage – Olomouc  
European Jazz Days – Hranice

### May

Author Šela Marathon – Helfštýn Castle  
Mohelnice Grand Prix – Mohelnice  
Colonnade opening – Teplice nad Bečvou Spa  
Theatre Flora – Olomouc  
Pilgrimage of the Visitation of the Virgin Mary – Olomouc – Svatý Kopeček  
March for the Loštice Cheese – Loštice  
Beerfest Olomouc – Olomouc  
Museum Night – Olomouc  
Dvořák's Olomouc – Olomouc  
Church Night – numerous towns in the region

### June

Ecce Homo Šternberk, European Championship – Šternberk  
Záhorské Festival – Lipník nad Bečvou  
Hanakian Venice – Litovel  
Žváček Festival – Konice  
Wolker's Prostějov – Prostějov  
At the Castle and Below – Přerov  
In Fairy Tales – Náměšť na Hané Château  
Hanakian Centre of the World – Velká Bystřice  
Traditional Feast – Náměšť na Hané  
City Festival – Olomouc  
Loštice Festival of Music and Cheese – Loštice  
Uničov Fair – Uničov  
Hranice Rock Fest – Hranice  
Song Festival – Olomouc  
Mattoni ½ Marathon Olomouc

### July

Ride of the Kings – Doloplazy  
Celtic Night – Plumlov  
Josefkol International Meeting of Wheelwrights – Čechy pod Kosířem  
Hanakian Feast – Němčice nad Hanou

Brass Music Festival – Dřevohostice  
Music Summer – Litovel

### August

St. Lawrence Feast – Přerov  
Flowers for the Lady of the Château – Náměšť na Hané Château  
Tovačov Portal – Tovačov  
Kojetín Feast – Kojetín  
Flora Olomouc – Summer Stage  
Mohelnice Stagecoach – Mohelnice  
Hefaiston – Helfštýn Castle  
Šternberk Hill – Šternberk Castle  
Bobr Bike – Litovel  
Litovel Opener – Litovel  
Marshal Radetzky Celebration – Olomouc  
Balloons Above the Castle – Bouzov  
International Festival of Flamenco and Spanish Culture – Olomouc  
Rock at the Château – Plumlov Château  
Fencing Weekend – Plumlov Château

### September

Folk Year, Folk Festival – Velká Bystřice  
Ecce Homo Historic – Šternberk  
European Heritage Days – A number of places in the region  
Prostějov Hanakian Festival – Prostějov  
International Organ Festival – Olomouc  
International Festival of Light and Video-mapping – Olomouc  
Heart Day – Teplice nad Bečvou Spa  
European Autocross Championship – Přerov  
St. Wenceslas Feast – Tovačov

### October

Flora Olomouc – Autumn Stage – Olomouc  
Czech-Slovak Jazz Festival – Přerov  
Bobr Cup – Litovel  
Hradec Pond Harvest – Tovačov

### November - December

Advent Olomouc  
Christmas markets in cities of the region

Dates are subject to change.



# Untouched natural paradise

## Tip 1: The highest Moravian mountain

One of the most attractive places of the Jeseníky Mountains is the Praděd Mountain (1,492 metres above sea level). It is the tallest peak of the Jeseníky Mountains and of all of Moravia. Its elevation is further extended by a 146.5-metre-high television transmitter. There is a restaurant and observation tower on the top.

The Jeseníky Mountains are a protected landscape area offering **exceptional and unspoilt nature**. The local scenery is gorgeous and ever-changing. In the spring, summer, and autumn, it is cloaked in fantastic colours, while in the winter it calms down and is clothed in a white robe. The Jeseníky are made up of the following mountain ranges: Hrubý Jeseník and its foothills, the Rychleby Mountains, Králický Sněžník, and the Nízký Jeseník Mountains.

## Tip 2: Rejváz, National Nature Reserve

Rejváz is the largest peat bog in Moravia and was formed in the post-ice age 6,000 or 7,000 years ago. The Moss Lake can be reached by going along the educational trail from Rejváz, renowned for its carved chairs with the portraits of Rejváz residents.



## Tip 3: Na Špičáku and Na Pomezí Caves

The Jeseníky Mountains area features stunning stalactite beauty in two caves. The Na Pomezí Caves are the largest cave system in the Czech Republic formed by marble dissolution, and the Na Špičáku Caves are among the oldest documented caves in Central Europe (1430).



## Tip 4: Králický Sněžník, National Nature Reserve

Králický Sněžník is the cradle of the largest Moravian river, the Morava. It is located in the centre of the mountains bearing the same name, and its peak (1,424 metres above sea level) offers breathtaking views. Under the peak, not far from where the Morava River has its source, you can see an elephant calf statue – the symbol of Králický Sněžník.



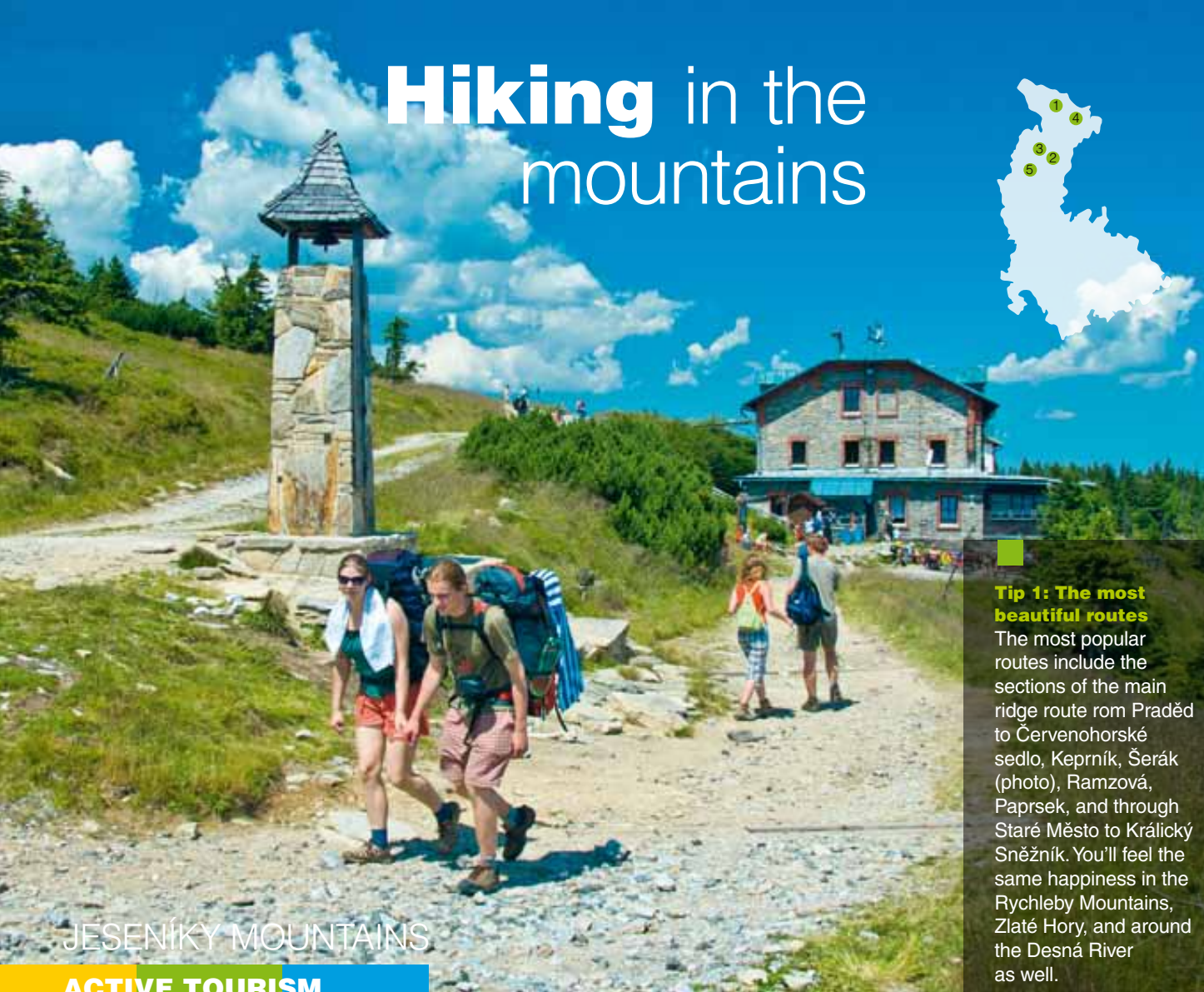
## Tip 5: Šerák-Keprník, National Nature Reserve

Šerák-Keprník is the oldest nature reserve in Moravia. It protects a number of rare plants and trees, as well as several large highland peat bogs. Many hiking trails lead to the peak of Šerák Mountain (1,351 metres above sea level) which provides magnificent panoramas.





# Hiking in the mountains



JESEŇÍKY MOUNTAINS

ACTIVE TOURISM

## Tip 1: The most beautiful routes

The most popular routes include the sections of the main ridge route from Praděd to Červenohorské sedlo, Keprník, Šerák (photo), Ramzová, Paprsek, and through Staré Město to Králícký Sněžník. You'll feel the same happiness in the Rychleby Mountains, Zlaté Hory, and around the Desná River as well.

## Tip 2: Observation towers

Observation towers are always popular tourist destinations, and the Jeseníky Mountains are no different. The region features for example Biskupská Kupa near Zlaté Hory (the oldest observation tower in the Jeseníky Mountains), Blueberry Hill near Javorník (photo), Zlatý Chlum near Jeseník, Háj near Šumperk, and the youngest observation tower of U Tetřeví Chaty near Kouty nad Desnou, which was opened in 2014.



## Tip 3: Mountain cottages

The Jeseníky Mountains are known for a number of remarkable mountain cottages. Some of them date as far back as the late 19th century. They include Šerák and Švýčárna (photo). Both are located in the most popular part of the main ridge route.



## Tip 4: Waterfalls

In Silver Spring Valley, 5 kilometres from the village of Žulová, you'll find a system of small waterfalls and cascades. The Bílá Opava Valley features a beautiful waterfall cascade, and the High Waterfall near Bělá pod Pradědem is the highest in the region.

## Tip 5: Natural attractions

The natural attractions of the Žulová Area include numerous flooded quarries. On the western slope of Smolný Hill, there is a rock town with remarkable caverns that used to be associated with supernatural beings – the folk of Venus – which is why they are called the Bowls of Venus.



When you visit the Jeseníky Mountains, **you can plan short walks as well as more demanding day-long hikes.** It depends on whether you are casual walkers or experienced hikers. You'll be rewarded with beautiful scenery, clean air, good services, and unique experiences.



# Experiences and adrenaline

## JESENÍKY MOUNTAINS

### ACTIVE TOURISM



#### Tip 1: Bike routes

The Jeseníky Mountains boast various bike parks. The Rychleby Trails (photo) offer more than 60 kilometres of trails of varying levels of difficulty and include both old stone trails and modern flow trails. The bike park in Kouty nad Desnou is unique, as it operates a six-seater cable car to the elevation of 1,100 metres above sea level; it also has a wide range of trails of varying levels of difficulty.

#### Tip 2: Witch's Bike Trail

This one-of-a-kind bike trail is steeped in natural beauty and features places where the cruel witch trials took place in the 17th century.

The entire route is 138 kilometres long and there are 20 stops pertaining to specific historical events.



#### Tip 3: Fun for Children

The Jeseníky Mountains are a paradise for children. Summer bobsleds, mountain mini-cars, downhill scooter rides, bike trails, and grass skiing are some of the many activities available for children.



#### Tip 4: Adrenaline parks

Adrenaline takes many forms and is suitable for all age groups in the Jeseníky Mountains. Štítý is home to a centre built by Olympic champion Aleš Valenta for acrobatic ski and snowboard jumping into water. It is the greatest of its kind worldwide in terms of the range of services offered.

The Jeseníky Mountains are also home to many **unique activities**. You can choose from bike parks, special bike trails, and adrenaline parks. If you like in-line skating, the possibilities are endless in the Czech Republic. The 2.5-kilometre-long one-way trail along the Dlouhé Stráně Reservoir, 1,300 metres above sea level, offers spectacular views! There is also the **longest downhill scooter track** in the Czech Republic (17 kilometres long). You won't find this anywhere else!



#### Tip 5: On horseback

If you prefer the rural way of life, visit the Jeseníky Mountains to find peace, quiet, and animals. You can use the services of local farms and ranches. Try a short ride or a several-week-long holiday at a farm.





# Skiing for everyone

JESENÍKY  
MOUNTAINS

ACTIVE HOLIDAY

## Tip 1: Skiing for families with children

Given the natural terrain of the Jeseníky Mountains, the mountains are ideal for families with children, and the well-maintained slopes are perfect for teaching beginners. Everyone will be impressed by the new blue 3,050-metre-long ski slope, the longest in Moravia.

## Tip 5: Snow parks

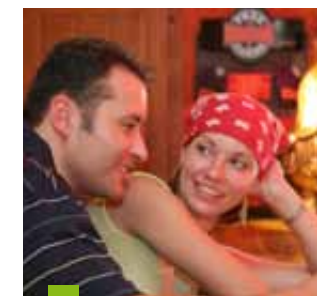
There are excellent conditions for snow parks in the Jeseníky Mountains.

Most major centres offer attractive obstacle courses, of which the longest one is the one-kilometre obstacle course in the largest snow park in Moravia.



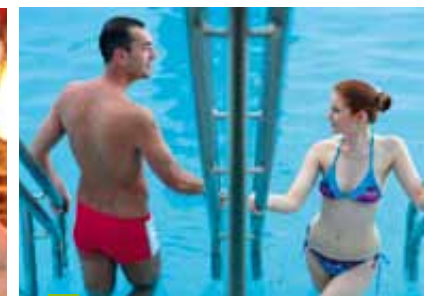
## Tip 2: Skiing for experienced skiers

The Jeseníky Mountains also offer comfortable and safe skiing for experienced skiers. All you have to do is choose from the many slopes of varying difficulty. The largest ski resort in Moravia is found in the Jeseníky, with more than 11 kilometres of ski slopes. Many of the centres are accessible by regular bus lines from major Moravian cities.



## Tip 3: Entertainment continues at night

After you return from the slopes and snowy plains, you can still find entertainment in the Jeseníky Mountains. Many of the centres put on a variety of evening events for children and adults alike.



## Tip 4: From the slopes to the spa

The Jeseníky Mountains are known for their unique spas. Many of the spas offer specialised ski stays. Thermal pools, hot tubs, and spa treatments can work miracles after a day of skiing.



Stunning natural scenery, the joy of exercise, and over **100 kilometres of ski runs** for beginners as well as advanced skiers. **More than 10 chairlifts**, artificial snow, night skiing, and rentals. Difficult runs, snowboarding snow parks, ski schools, and children's ski resorts. The Jeseníky Mountains – great skiing for everyone.



# Winter fairy tale

## Tip 1: The longest winter in the Czech Republic

The weather complements the excellent winter conditions in the Jeseníky Mountains.

In the highest parts, snow generally remains until the spring – making it the longest snow period in the Czech Republic. Come and enjoy!

The Jeseníky Mountains give you **beautiful unspoilt nature and some of the best air** in the Czech Republic. Add to this the dozens of kilometres of ski slopes, cross-country trails, and top-quality services, and you'll see that a holiday in the Jeseníky Mountains is a true winter experience.

## Tip 2: Winter fairy tale

Many places in the Jeseníky Mountains are an undiscovered paradise of peace and quiet. Everyone will find their favourite spot where they feel comfortable, and they'll keep coming back. The Jeseníky Mountains will make you feel like you are in a winter fairy tale.



## Tip 3: Winter entertainment for children

Children are welcome at any of the ski resorts. There are children's parks with balloons, children's runs, children's lifts, and slalom slopes. You can also try snow boats (snow-tubing) or sleigh rides.



## Tip 4: Excellent services

You will find top-quality services everywhere. Refreshments, ski schools with experienced instructors, luggage rooms, equipment rentals, and ski servicing. Ski without waiting as the transport capacity of cable cars and ski-tows is sufficient for the crowds.



## Tip 5: The most beautiful cross-country trails

There are more than 400 kilometres of cross-country trails, offering fabulous views of the snowy landscape. You can check the current condition of the trails on your mobile phone. Choose a casual trail for a short ski or a long and relatively demanding trail if you are up for it. The ridge trails linking the local mountain cottages are increasingly popular.





# Witch trials and more



## Tip 1: Velké Losiny Château

The Velké Losiny Château is dominated by a slender octagonal six-storey tower and decorated with arcades rippling along the three wings in three rows, one above another. On the second floor, there is a courtroom and a hall in which witch trials took place in the 17th century. You can soak up the atmosphere and enjoy moments of well-being in the park surrounding the château.

## Tip 2: Velké Losiny Handmade Paper Mill – Museum of Paper

Over its four centuries of continuous operation, the mill has made paper using traditional manufacturing processes. This exceptional technical monument contains exhibits related to the history of manufacturing and a section of workshops where visitors can see how paper is made.



## Tip 3: Janský Vrch Château

This ancient seat of the Wrocław bishops is the most attractive sight of Javorník. In addition to the beautiful interiors, it boasts the largest collection of pipes and smoking accessories in the Czech Republic, which contains 1,200 items.



## Tip 4: Pilgrimage into the heart of the Jeseníky Mountains

Pilgrimage trails in the heart of the Jeseníky Mountains lead to the major pilgrimage destinations in northern Moravia. The trails are marked and offer beautiful views as well as examples of the local architecture and religious monuments.

## JESENÍKY MOUNTAINS

### CULTURAL TOURISM

The Jeseníky Mountains are a synonym for countless hiking trails, unique monuments, and interesting history. **You will get goosebumps when you think of the witch trials** that took place at the Velké Losiny Château. Many other places in the region are also associated with witch trials. You can read about them in the “Traces of Blood in the Jeseníky Mountains” guidebook or at [www.navstivtejeseniky.cz](http://www.navstivtejeseniky.cz). There is a unique paper mill, châteaux, and ruins, and pilgrimage sites including wooden churches in Žárová, Klepáčov, and Maršíkov.

## Tip 5: Witch exhibitions

If you want to learn more about the time of the infamous witch trials of the 17th century, you should visit Šumperk or Jeseník. In both towns, you can visit modern multimedia exhibitions and learn more about the witch inquisitions in the Jeseníky Mountains.





# What **you'll find** nowhere else



## **Tip 1: Dlouhé Stráně pumped-storage hydroelectric power plant**

The power plant is one of the major attractions of the Jeseníky Mountains and of all of the Czech Republic. Its reversible water turbine is the largest in Europe and this power plant has the greatest difference in elevation in the Czech Republic and with the highest installed capacity among Czech hydro power plants (2x 325 MW). The tour includes a film, a visit to part of the power plant, and an optional view from the edge of the upper reservoir at 1,350 metres above sea level!

JESENÍKY MOUNTAINS

**CULTURAL TOURISM**

**There are also unique exhibitions and curiosities** in the Jeseníky Mountains. You and your children will enjoy the Agricultural Open-Air Museum, Veteran Museum, and animal park in Rapotín. There are interesting things to see in the small parish museum in Zábřeh, the veteran museum in Česká Ves, and the Museum of Roads in Víkřovice. The major attractions include the Gold Ore Mine & Mill near Zlaté Hory and the Dlouhé Stráně pumped-storage hydroelectric power plant.

## **Tip 2: Gold Ore Mine & Mill**

An educational trail about the replicas of medieval mining mills leads through the valley of lost tunnels near Zlaté Hory. On the trail, you come across an open log cabin with a mill used for the crushing of gold ore, and an ore mill. You can even try panning for gold!



## **Tip 3: Military border fortifications**

History lovers will appreciate the museum of pre-war Czechoslovak fortifications in Branná and the Military Museum in Staré Město, as well as the system of border fortifications built around the city between 1937 and 1938. It is one of the best fortification systems in Europe.



## **Tip 4: Jan Eskymo Welzl**

– explorer, hunter, gold-miner, and traveller – is the most famous native of Zábřeh. Visit the exhibition dedicated to him in the Zábřeh Museum, located in the Pod Podloubím House.

## **Tip 5: In the footsteps of Alois Nebel**

Embark on one of the most beautiful railway lines in the Czech Republic, the Silesian Semmering. The railway line, with its mountainous profile and numerous serpentines, is the connection between Hanušovice and Jeseník. The turbulent history of the railway inspired a comic book and subsequently a famous film called Alois Nebel. You can download a mobile application at [www.navstivtejeseniky.cz](http://www.navstivtejeseniky.cz). The railway line runs through Horní Lipová and the Lipová Spa, where there is a small museum pertaining to the Silesian Semmering.





# The Jeseníky Mountains healing mountains

## Tip 1: Velké Losiny – a unique Moravian thermal spa

The Velké Losiny Thermal Spa is one of the oldest and best-known Moravian spas. The first wooden spa building was built as early as 1592. The local thermal sulphurous water (around 36 °C) has beneficial effects on the musculoskeletal and circulatory systems and is used to treat diseases of the nervous system and skin. The unique Thermal Park (to be opened in 2015) will offer nine swimming pools with thermal water.

**The Jeseníky Mountains boast exceptional air and even a thermal spa.** If you like mountains, refreshing springs, a spa atmosphere, and leisurely walks, you should not miss the local spa. You may not know that it was in the Jeseníky Mountains that the famous Vincenz Priessnitz founded the first hydrotherapy institute in the world in 1822. His healing methods are used to this day; they have made the Jeseník spa park a European rarity.

## Tip 2: The Jeseníky Mountains – exceptional climatic conditions

The uniqueness of the Jeseníky Mountains lies in the preserved nature and excellent climatic conditions. It was found by repeated monitoring that the local micro-climate around Jeseník, with its unique healing effect, ranks third in the world just behind Bad Gastein in Austria and Carlsbad in the U.S.

## Tip 3: Relaxation and wellness stays

After hikes and romantic walks, you should relax and renew your energy. In the Jeseníky Mountains, you can choose from massages, bubble baths, and body wraps. Beauty, health, and relaxation. There is a wide range of relaxation and therapy centres in hotels and guest houses.



## Tip 4: Bludov Spa

The spa in the foothills of the Jeseníky Mountains near Šumperk offers care based on the latest medical findings in the fields of balneology, obesity, and rehabilitation.

## Tip 5: Priessnitz Health Spa Jeseník

The resort near Jeseník, set into the landscape, dominates the surrounding area and offers unique views of the main ridge of Hrubý Jeseník. The local climate is suitable for the treatment of the upper and lower respiratory tract, blood circulation, the nervous system, and autonomic nerves.





# For **locals** and **tourists** alike



## Brewing Museum Hanušovice

Beer has been brewed for nearly 140 years in the Hanušovice brewery. Today, there is also a museum where you can see an exhibition of tools and other items related to the brewing and drinking of beer.

A vacation is inherently associated with good accommodation, pubs, local food, and interesting and appealing events. In the Jeseníky Mountains, you will also find the humility and hospitality of the local people. Take your pick and don't miss anything!

**For more information, visit [www.ok-tourism.cz](http://www.ok-tourism.cz)**



Ochutnejte Jeseníky

## Tip: Taste the Jeseníky Mountains

The festival, held throughout the year, focuses on local products and original cuisine, based on the traditions and history of the highest Moravian mountains. Visit one of the participating restaurants and "Taste the Jeseníky Mountains"!



## THE MOST IMPORTANT EVENTS IN THE JESENÍKY MOUNTAINS

### January

"Fifteen", a cross-country race around Paprsek

### February

JeLyMan – a ski marathon, part of SkiTour,  
Staré Město

### March

Jeseníky 24-hour cross-country race

### April

In the Footsteps of the Gold Miner Eskymo  
Welzl – Zábřeh  
Opening of the Rychleby Trails – Černá Voda  
Opening of the international tourist and spa  
season – Jeseník  
Rock Point Mountain Challenge – Zábřeh

### May

May hike to "Blueberry Hill" – Javorník  
Eskymo Welzl Grand Prix – Zábřeh  
Štítý Fair – Štítý  
Brewery March – Hanušovice  
"Moss Lake" Opening – Rejvíz  
Opening of the spa season – the Priessnitz Spa  
Zpěváček Festival – Velké Losiny  
Šumperk Festival – Šumperk

### June

Theatre in the Park – Šumperk  
Midsummer Festival – Velké Losiny  
Javorník Area Days – Javorník  
Maršíkov Fair – Velké Losiny  
International Brass Music Festival – Jeseník  
7apůl Fest – Zábřeh  
Rychleby MTB Challenge – Černá Voda

### July

Jeseníky Nugget – Lipová Spa, Miroslav  
Wood-Carving in Hanušovice  
Rychleby 40 – Jeseník  
St. Anne Fair – Staré Město  
Bio-Festival – Staré Město  
Freestyle Czech Open – Štítý  
Hynčice Cup – Hynčice

Velké Losiny Culture Summer – Velké Losiny  
Golden Days – Zlaté Hory  
Welzl's Quadrathlon – Zábřeh

### August

Pilgrimage – Church of the Virgin Mary  
of Mercy, Zlaté Hory  
Štítý Fair – Štítý  
Pekařov Fair – Pekařov  
European Bat Night – Na Špičáku Cave  
Hanušovice Fair – Hanušovice  
Snowboard & Freeski Contest – Štítý  
International Folklore Festival – Šumperk  
Gold Panning – Zlaté Hory  
The Jeseníky Mountains Are Having Fun –  
Jeseník

### September

European Heritage Days – A number of places  
in the region  
Jeseníky Harvest Festival – Bělá pod Pradědem  
Emperor Joseph II in Horní Lipová –  
Horní Lipová  
Kolštejn Motorcycle Race – Branná  
Pilgrimage of Three Nations – Church of the  
Virgin Mary of Mercy, Zlaté Hory  
International Music Festival of Carl Ditters von  
Dittersdorf – Javorník  
International Climb to Králický Sněžník  
Mountain – Around Králický Sněžník Mountain  
Brewer's Festival – Hanušovice  
Horní Lipová Fair – Horní Lipová  
Czech Championship in Mushroom Hunting –  
Filipovice

### October

Zlaté Hory Trekking – Zlaté Hory  
Džemfest – Šumperk  
Slovak Days – Jeseník  
Vincenz Priessnitz's Week – Jeseník

### November

Blues Alive International Festival – Šumperk





# Information centers in the Olomouc Region

## Dřevohostice

Zámecká 88, 751 14 Dřevohostice  
Cell phone: +420 723 910 281  
[www.drevohostice.cz](http://www.drevohostice.cz)

## Horka nad Moravou

Skrbeňská 669/70, 783 35 Horka nad Moravou  
Phone: +420 585 154 711  
[www.slunakov.cz](http://www.slunakov.cz)

## Hranice

Masarykovo nám. 71, 753 01 Hranice  
Phone: +420 581 607 479  
[www.mic.hranet.cz](http://www.mic.hranet.cz)

## Kojetín

Masarykovo nám. 8, 752 01 Kojetín  
Phone: +420 581 202 202  
[www.kojetin.cz/meks](http://www.kojetin.cz/meks)

## Konice

Kostelní 46, 798 52 Konice  
Phone: +420 582 397 250  
[www.mekskonice.cz](http://www.mekskonice.cz)

## Lipník nad Bečvou

nám. T. G. Masaryka 13, 751 31 Lipník n. B.  
Phone: +420 581 773 763  
<http://info.mesto-lipnik.cz>

## Litovel

nám. Přemysla Otakara 762, 784 01 Litovel  
Phone: +420 585 150 221  
[www.tic.litovel.eu](http://www.tic.litovel.eu)

## Mohelnice

nám. Svobody 1, 789 85 Mohelnice  
Phone: 583 430 915  
[www.regionmohelnicko.cz](http://www.regionmohelnicko.cz)

## Moravský Beroun

náměstí 9. května 4, 793 05 Mor. Beroun  
Phone: +420 554 773 147  
[www.morberoun.cz](http://www.morberoun.cz)

## Náměšť na Hané

Hrad 1, 783 44 Náměšť na Hané  
Phone: +420 585 952 184  
<http://zamek.namestnahane.cz>

## Němčice nad Hanou

Palackého náměstí 25, 798 27 Němčice n. H.  
Phone: 582 386 440  
[www.nemcicenh.cz](http://www.nemcicenh.cz)

## Olomouc

Horní náměstí (podloubí radnice) 583  
779 11 Olomouc  
Phone: +420 585 513 392  
<http://tourism.olomouc.eu>

## Olomouc

Švédská 10, 772 00 Olomouc  
Phone: +420 585 231 460  
[www.tourist-centrum.cz](http://www.tourist-centrum.cz)

## Plumlov

Zámecká 99, 798 03 Plumlov  
Phone: +420 588 882 662  
[www.plumlovsko.cz/tic.asp](http://www.plumlovsko.cz/tic.asp)

## Přerov

Městské informační centrum Přerov  
Náměstí T.G. Masaryka 7, 750 02 Přerov  
Phone: +420 581 205 131  
[www.prerov.eu](http://www.prerov.eu)

## Prostějov

nám. T. G. Masaryka 130/12  
796 01 Prostějov  
Phone: +420 582 329 722  
[www.prostejov.eu](http://www.prostejov.eu)

## Prostějov

Pernštýnské nám. 176/8  
796 01 Prostějov  
Phone: +420 582 329 723  
[www.prostejov.eu](http://www.prostejov.eu)

## Slatínice

Slatínice 29, 783 42 Slatínice

## Šternberk

Čs. Armády 19, 785 01 Šternberk  
Phone: +420 587 571 243  
[www.sternberk.eu](http://www.sternberk.eu)

## Uničov

Masarykovo nám. 29, 783 91 Uničov  
Phone: +420 585 054 880  
[www.unicov.cz](http://www.unicov.cz)

## Velká Bystřice

Zámecké náměstí 775,  
783 53 Velká Bystřice  
Cell phone: 734 236 506

## Bludov

Tř. A. Kašpara 353, 78961 Bludov  
Cell phone: 583 238 177  
[www.bludov.cz](http://www.bludov.cz)

## Černá Voda

Černá Voda 267, 790 54 Černá Voda  
Handy: +420 739 710 494  
[www.rychlebskestezky.cz](http://www.rychlebskestezky.cz)

## Hanušovice

Hlavní 135, 78833 Hanušovice  
Phone: +420 583 285 615  
[www.ic.hanusovice.info](http://www.ic.hanusovice.info)

## Javorník

Nádražní 160, 79070 Javorník  
Phone: +420 584 440 688  
[www.kulturnidumjavornik.cz](http://www.kulturnidumjavornik.cz)

## Jeseník

Palackého 1341/2, 79001 Jeseník  
Phone: +420 584 498 155  
[www.jesenik.org](http://www.jesenik.org)

## Jeseník, Priessnitzovy lázně

Priessnitzova 1349/24a, 79001 Jeseník  
Phone: +420 584 941 470  
[www.priessnitz.cz](http://www.priessnitz.cz)

## Kouty nad Desnou

Lyžařský areál Kouty 1, 78811 Kouty n. D.  
Phone: +420 583 283 282  
[www.dlouhe-strane.cz/cs/informacni-centrum](http://www.dlouhe-strane.cz/cs/informacni-centrum)

## Lipová-lázně

Lipová-lázně 476, 79061 Lipová-lázně  
Phone: +420 584 421 209  
[www.ic-lipova.cz](http://www.ic-lipova.cz)

## Mikulovice

Hlavní 214, 79083 Mikulovice  
Phone: +420 584 429 381  
[www.mikulovice.cz](http://www.mikulovice.cz)

## Rapotín

Šumperská 530, 788 14 Rapotín  
Phone: +420 583 212 211  
[www.kkcrapotin.cz](http://www.kkcrapotin.cz)

## Staré Město

nám. Osvobození 166, 78832 Staré Město  
Phone: +420 583 239 134  
[www.staremesto.info](http://www.staremesto.info)

## Štítý

nám. Míru 55, 789 91 Štítý  
Phone: +420 583 440 109  
[www.stity.cz](http://www.stity.cz)

## Šumperk

Hlavní třída 22, 78701 Šumperk  
Phone: +420 583 214 000  
[www.infosumperk.cz](http://www.infosumperk.cz)

## Velké Losiny

Lázeňská ul. 674, 78815 Velké Losiny  
Phone: +420 583 248 248  
[www.iclosiny.cz](http://www.iclosiny.cz)

## Vidnava

Radniční ulice 84, 79055 Vidnava  
Phone: +420 588 517 237  
[www.vidnava.cz](http://www.vidnava.cz)

## Zábřeh

ČSA 1, 789 01 Zábřeh  
Phone: +420 583 411 653  
<http://tourism.zabreh.cz/>

## Zlaté Hory

Bezručova 144, 79376 Zlaté Hory  
Phone: +420 584 425 397  
[www.zlatehory.cz](http://www.zlatehory.cz)

## Žulová

Kostelní 1, 79065 Žulová  
Phone: +420 584 437 151  
[www.zulovsko.cz](http://www.zulovsko.cz)