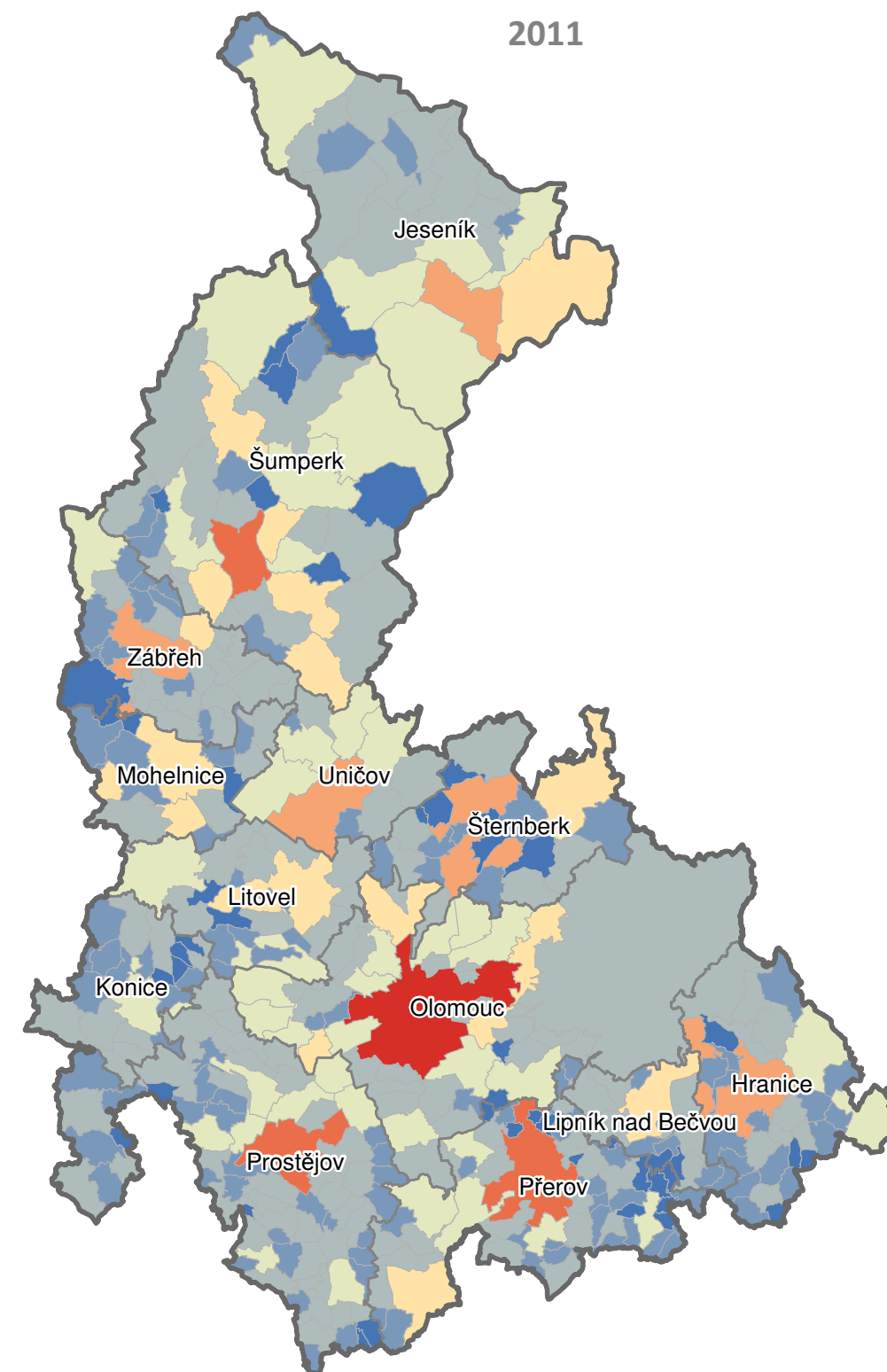
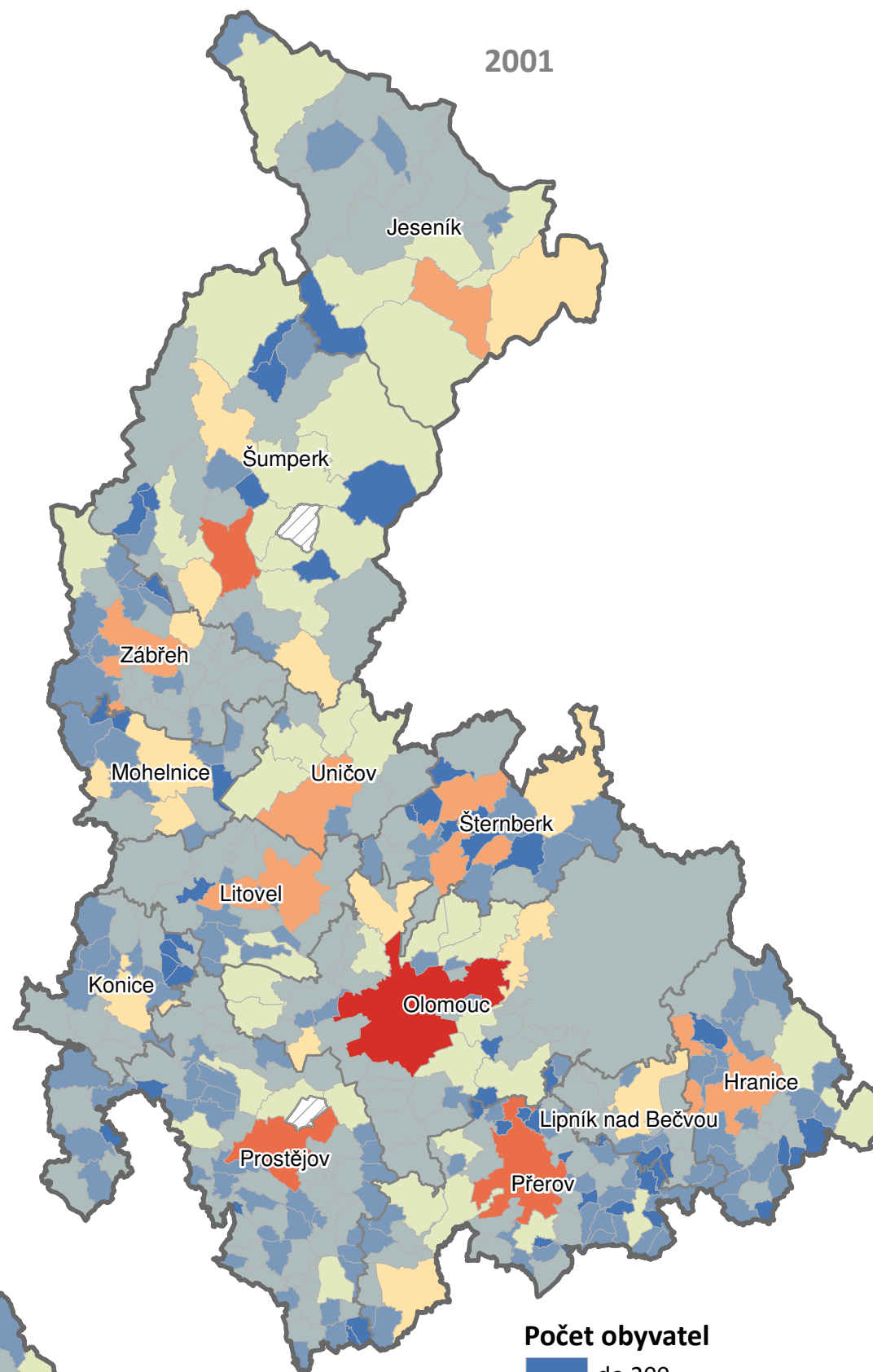
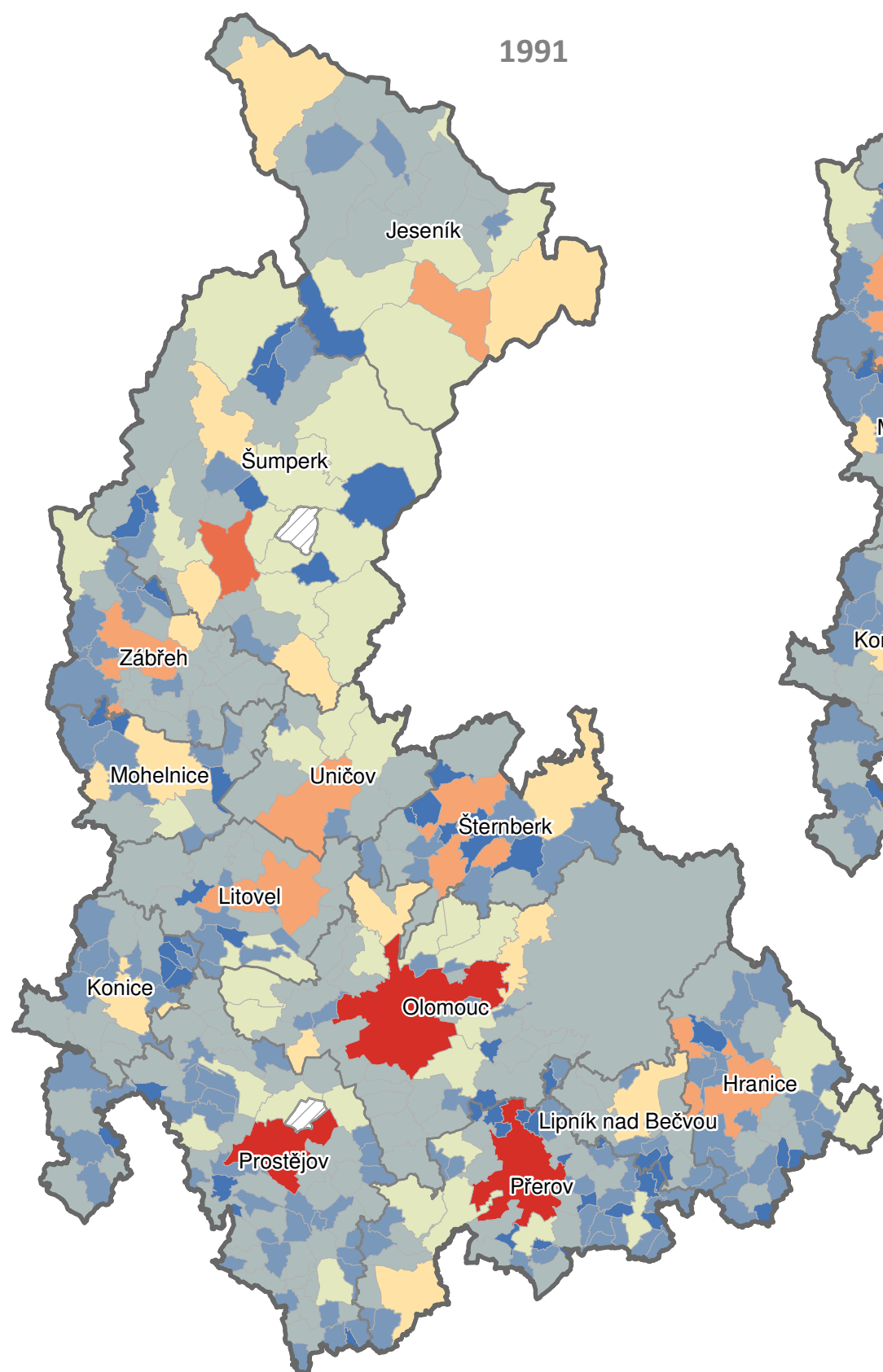





STUDIE SÍDELNÍ STRUKTURY

3.1.2 Počet obyvatel v obci v letech 1991, 2001 a 2011










Rok	Počet obyvatel celkem	Počet obyvatel Olomouc	
			%
1991	647 341	102 786	15,88
2001	643 817	102 607	15,94
2011	638 638	99 529	15,58



Administrativní hranice

-  hranice kraje
-  hranice ORP
-  hranice obce

Počet obyvatel

-  do 200
-  201 – 500
-  501 – 1 500
-  1 501 – 3 000
-  3 001 – 10 000
-  10 001 – 25 000
-  25 001 – 50 000
-  nad 50 000
-  bez dat